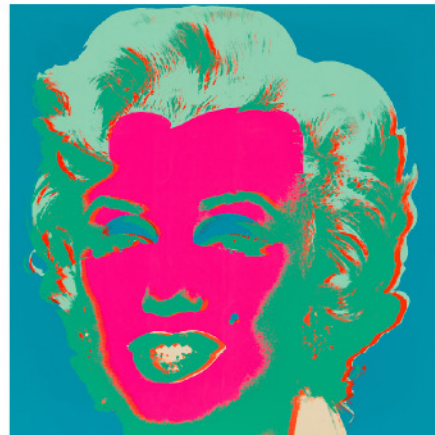
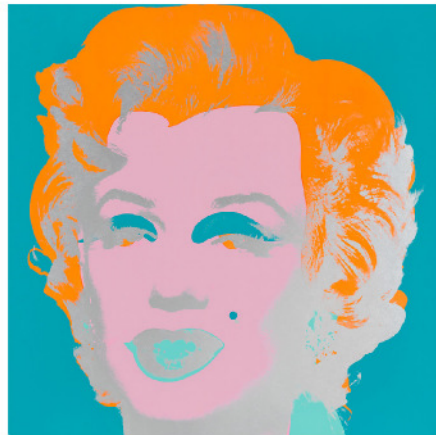
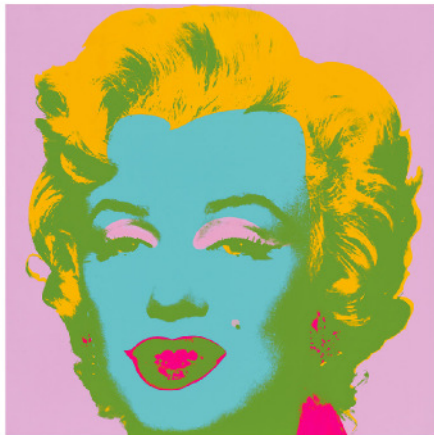


POST-WAR AND CONTEMPORARY ART  
DAY SALE



CHRISTIE'S










# As a leader in the art market,

Christie's is committed to **building a sustainable business model** that promotes and protects the environment. Our digital platform on christies.com offers a conscious approach, creating an immersive space where we bring art to life through high quality images, videos and in-depth essays by our specialists.

With this robust online support, Christie's will print fewer catalogues to ensure that we achieve our goal of **Net Zero by 2030**. However, when we do print, we will uphold the highest sustainable standards.

The catalogue you are reading is:

-  printed on fully recycled paper;
-  printed with vegetable-based ink and biodegradable laminates;
-  printed in close proximity to our markets in an effort to reduce distribution emissions.

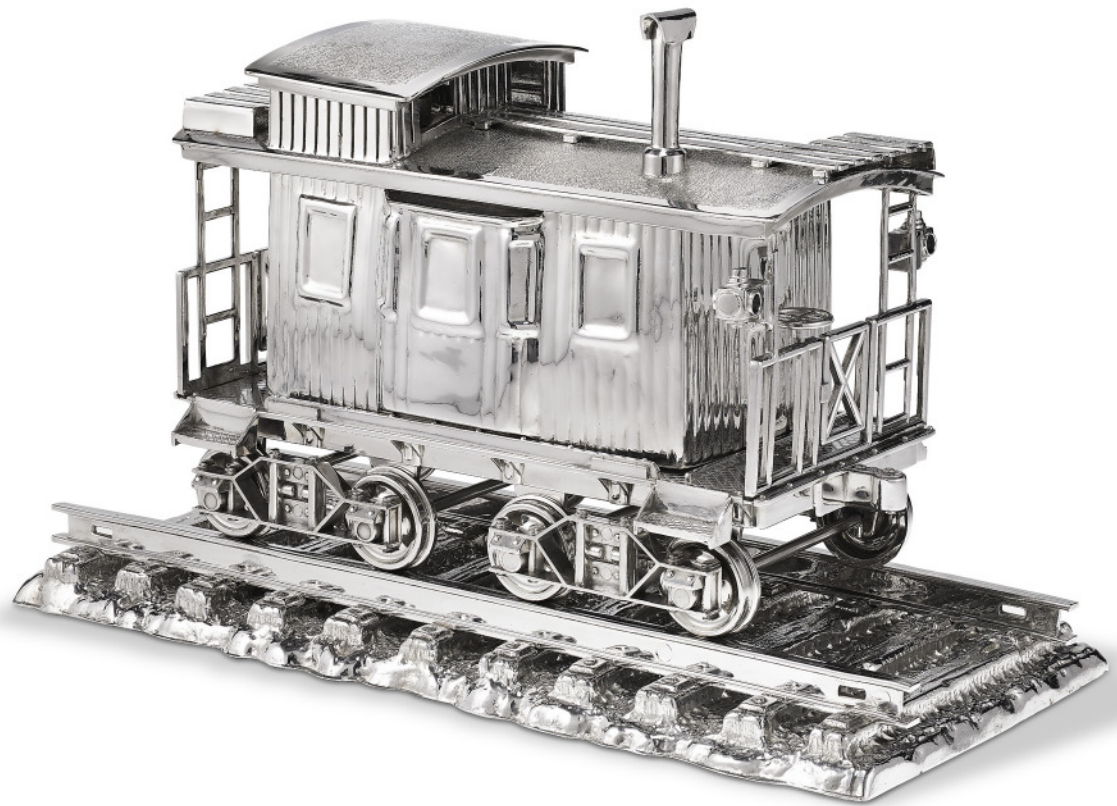


Please scan for more information about our sustainability goals and projects.

CHRISTIE'S



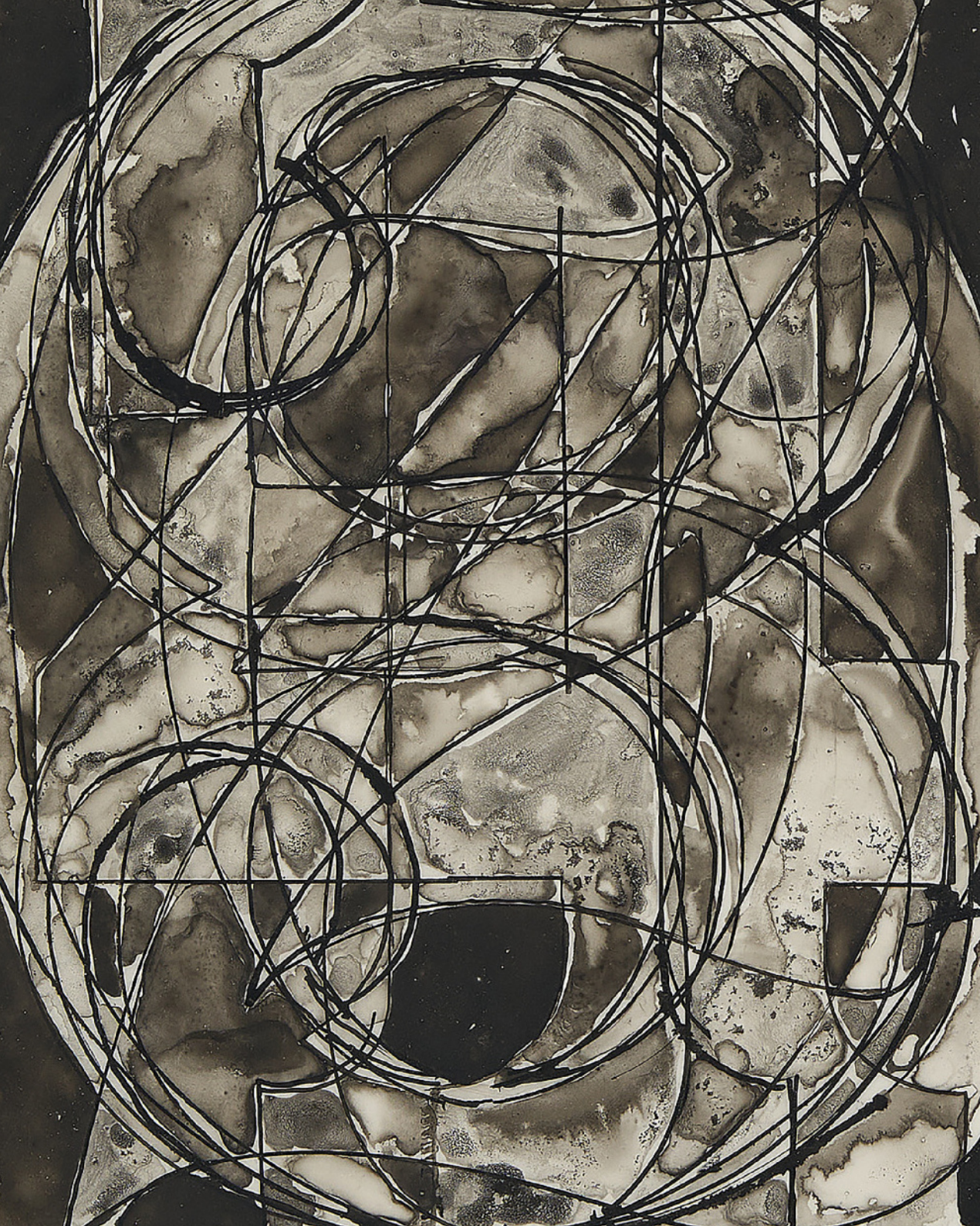












## POST-WAR AND CONTEMPORARY ART DAY SALE

### AUCTION

Friday 13 May 2022  
at 9.30 am (Lots 101-253)  
1.30 pm (Lots 301-366)  
and 3.30 pm (Lots 401-531)

20 Rockefeller Plaza  
New York, NY 10020

### VIEWING

Saturday 30 April–Friday 13 May  
Monday–Saturday 10.00–5.00 pm  
Sunday 1 May 1.00 pm–5.00 pm  
Sunday 8 May 10.00 am–5.00 pm

---

### AUCTIONEERS

Adrien Meyer (#1365994)  
Gemma Sudlow (#2016494)  
Tash Perrin (#1039052)  
David Kleiweg de Zwaan (#1365999)

### AUCTION LICENSE

Christie's (#1213717)

### AUCTION CODE AND NUMBER

To place bids please contact the Bid department +1 212 636 2437  
Please note this sale should be referred to as **BELLYCAM-20099**

### ABSENTEE AND TELEPHONE BIDS

Tel: +1 212 636 2000

### BIDDING ON BEHALF OF THE SELLER

The auctioneer may, at his or her sole option, bid on behalf of the seller up to but not including the amount of the reserve either by making consecutive bids or by making bids in response to other bidders. The auctioneer will not identify these as bids made on behalf of the seller and will not make any such bids at or above the reserve.



Scan to view full auction online

CHRISTIE'S



## CONTACTS

### CO- HEADS OF SALE

Kathryn Widing  
KWiding@christies.com  
+1 917 714 6305

Rachael White Young  
RRWhite@christies.com  
+1 917 689 5137

### HEAD OF SESSIONS

Caitlin Foreht  
CForeht@christies.com  
+1 917 224 9838

### JUNIOR SPECIALIST

Kathryn Marber  
KMarber@christies.com  
+1 646 866 1871

### CATALOGUERS

Taylor Nemetz  
TNemetz@christies.com  
+1 347 703 5270

Vanilla Anandam  
VAnandam@Christies.com  
+1 646 915 6573

### SALE COORDINATOR

Lily Damgard  
LDamgard@Christies.com  
+1 917 689 4032

### WE WOULD LIKE TO THANK:

Isabella Smith, Campbell Lee, Nathaniel Purdy, Helen Redmond, Haley Rosario Conde, Caitlin Chan, Anne Homans, Jack Nelson, Greg Coleman, Erica Thorpe, Rusty Riker, Matthew Masin, Corrie Searls, Kristen Hill-Clemons, Katya McCaffrey, Ahsiya Zurita, Stephen Jones, Mimi Warner, Samantha Smith, Paris Tully, Emily Bivins, Emily Misencik, Brian Evans, Olivia Schiff, Lindsay Griffith, Kristen France, Scott Marston, Ben Egan, Becca Mount, Hans Wolf-Guzman, Aaron Young, Michael Bucaria, Kathryn Mooney

### ESTIMATES AND RESERVES

Estimates are based on the condition, rarity, quality and provenance of the lots and on prices recently paid at auction for similar property. Estimates can change. No bidder or other person may rely on any estimates as a prediction or guarantee of the actual selling price of a lot or its value for any other purpose. Estimates do not include the buyer's premium or any applicable taxes. Each lot is subject to a reserve unless marked with the no reserve symbol.

### FURTHER INFORMATION – NOT A CATALOGUE

This is not a catalogue for the auction. The sale of each lot is subject to the Conditions of Sale, Important Notices, and Explanation of Cataloguing Practice which are set out online, with other important sale information, at christies.com.

### SYMBOLS USED IN THIS PUBLICATION AND IMPORTANT NOTICES

Please see the Conditions of Sale at christies.com for full descriptions of the symbols used in this section and for other important sale information. Please note that all lots are marked as a convenience to you and we shall not be liable for any errors in, or failure to, mark a lot.

### SYMBOLS

- ◊ Christie's has a direct financial interest in the lot.
- ▲ Owned by Christie's or another Christie's Group company in whole or in part.
- ◆ Christie's has a direct financial interest in the lot and has funded all or part of our interest with the help of someone else.
- ⌘ Bidding by interested parties.
- Lot offered without reserve which will be sold to the highest bidder regardless of the pre-sale estimate in the catalogue.
- Lot incorporates material from endangered species which could result in export and/or import restrictions.
- See Storage and Collection pages in the catalogue for this sale.



## 2021 SCHEDULE OF SALES

Monday 9 May, 7:00PM

The Collection of Thomas and Doris Ammann Evening Sale

Tuesday 10 May, 7:00PM

21st Century Evening Sale

Wednesday 11 May, 11:00AM

Guy Laliberté Collection

Thursday 12 May, 7:00PM

The Collection of Anne H. Bass

*Immediately followed by 20th Century Evening Sale*

Friday 13 May

Post-War and Contemporary Art Day Sale: Session I

9:30AM

The Collection of Thomas and Doris Ammann Day Sale: Session II

1:30PM

Post-War and Contemporary Art Day Sale: Session III

3:30PM

Saturday 14 May

The Surrealist World of Rosalind Gersten Jacobs and Melvin Jacobs

9:30AM

Impressionist and Modern Art Works on Paper

11:30AM

Impressionist and Modern Art Day Sale

2:00PM

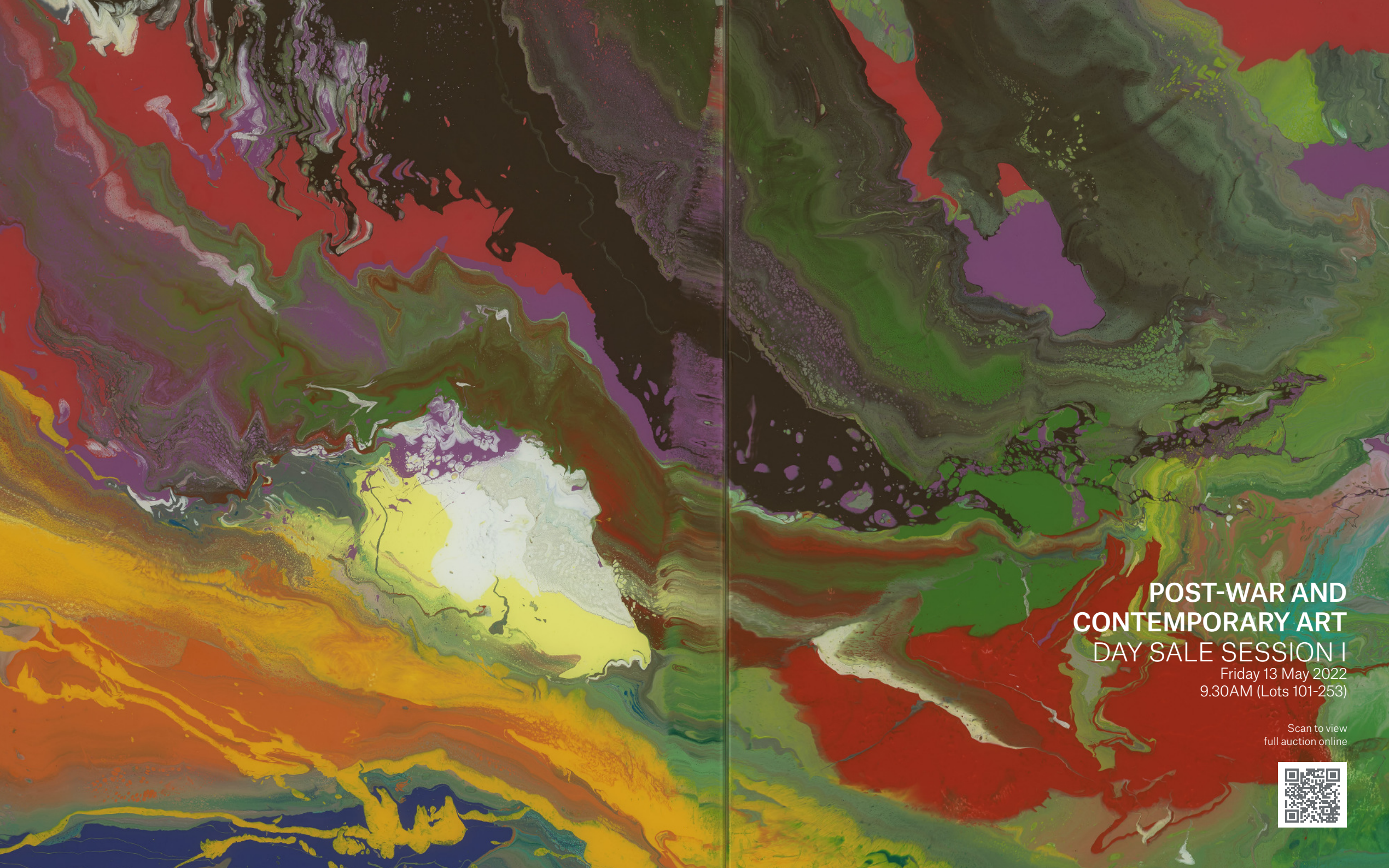
2 – 16 May

Picasso Ceramics Online

2-18 May

The Surrealist World of Rosalind Gersten Jacobs and Melvin Jacobs

Online

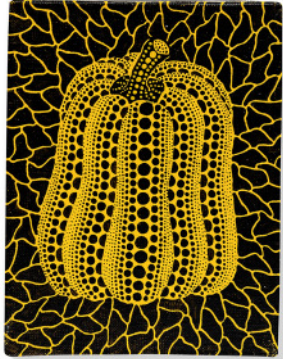


**POST-WAR AND  
CONTEMPORARY ART  
DAY SALE SESSION I**

Friday 13 May 2022  
9.30AM (Lots 101-253)

Scan to view  
full auction online





101

**YAYOI KUSAMA (B. 1929)**

*Pumpkin*

signed, titled in Japanese and dated 'Yayoi Kusama 1989'  
(on the reverse)  
acrylic on canvas  
7 x 5½ in. (17.8 x 14.2 cm.)  
Painted in 1989.

\$250,000-350,000

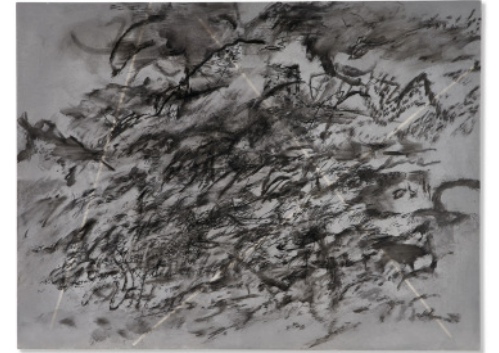
104

**JULIE MEHRETU (B. 1970)**

*Untitled*

acrylic, ink and graphite on wood panel  
18 x 24 in. (45.7 x 61 cm.)  
Executed in 2012.

\$300,000-500,000



102

**STANLEY WHITNEY (B. 1946)**

*This Array of Colors*

signed, titled and dated '2014 "This Array of Colors"  
Stanley Whitney' (on the reverse)  
oil on canvas  
48 x 48 in. (122 x 122 cm.)  
Painted in 2014.

\$350,000-550,000

SOLD BY THE FARNSWORTH ART MUSEUM WITH PROCEEDS  
DEDICATED TO THE ACQUISITIONS FUND

105

**LYNNE DREXLER (1928-1999)**

*Herbert's Garden*

signed, titled and dated 'Lynne Drexler Herbert's Garden 1960'  
(on the reverse)  
oil on canvas  
63¾ x 83½ in.  
Painted in 1960.

\$70,000-100,000



103

**SHARA HUGHES (B. 1981)**

*Weeping Blur*

signed, inscribed, titled and dated "'Weeping Blur"  
SHARA HUGHES 2018 NYC' (on the reverse)  
oil and dye on canvas  
57¾ x 50 in. (147 x 127 cm.)  
Executed in 2018.

\$400,000-600,000

PROPERTY FROM THE FAMILY OF NINA VAN RENSSLAER

106

**WAYNE THIEBAUD (1920 - 2021)**

*Three Ice Cream Cones*

incised with the artist's signature and date 'Thiebaud 1964'  
(lower right)  
oil on canvas  
12 x 15 in. (30.5 x 38.1 cm.)  
Painted in 1964.

\$2,500,000-3,500,000





PROPERTY FROM THE FAMILY OF NINA VAN RENSSELAER  
107

**WAYNE THIEBAUD (1920 - 2021)**

*Yo-Yos*

incised with the artist's signature and date 'Thiebaud 1963' (lower left); signed thrice, titled and dated 'Thiebaud 'Yo-Yos' Thiebaud '63 Thiebaud' (on the stretcher)  
oil on canvas  
12 x 12 in. (30.5 x 30.5 cm.)  
Painted in 1963.

\$2,000,000-3,000,000

110

**OLUWOLE OMOFEMI (B. 1988)**

*Yesterday has gone*

signed 'Oluwole Omofemi' (lower right)  
oil and acrylic on canvas  
41.7/10 x 47.1/5 in. (106 x 120 cm.)  
Painted in 2021.

\$30,000-50,000



108

**AMOAKO BOAFO (B.1984)**

*Shades of Brown*

signed, inscribed and dated 'AMOAKO M BOAFO 2019 KING' (lower right)  
oil on canvas  
88 x 77 in. (223.5 x 195.6 cm.)  
Painted in 2019.

\$400,000-600,000

111

**NICOLAS PARTY (B. 1980)**

*Portrait*

pastel on canvas  
39¼ x 35½ in. (100 x 90 cm.)  
Executed in 2014.

\$300,000-500,000



109

**GODWIN CHAMPS NAMUYIMBA (B. 1989)**

*Inside the Black Golf Closet*

signed, titled and dated 'Namuyimba Inside the Black Golf Closet 2021' (on the reverse)  
acrylic and mixed media on canvas  
78½ x 57¼ in. (200 x 146.7 cm.)  
Executed in 2021.

\$40,000-60,000

PROPERTY FROM AN IMPORTANT PRIVATE COLLECTION

112

**GEORGE CONDO (B. 1957)**

*The Diver*

acrylic on canvas  
60 x 48 in. (152.4 x 121.9 cm.)  
Painted in 2001.

\$600,000-800,000





113

**EDGAR PLANS (B. 1977)**  
*Bicycle Version (Basquiat Tribute)*

signed, titled and dated "Bicycle Version"  
BASQUIAT TRIBUTE 2019' (on the reverse)  
mixed media on canvas  
40 x 40 in. (100 x 100 cm.)  
Executed in 2019.

\$50,000-70,000



114

**EMMANUEL TAKU (B. 1986)**  
*Purple Sisters Embrace*

signed and dated 'Taku 2021' (lower right)  
oil, acrylic and mixed media on canvas  
78¾ x 50 in. (200 x 127 cm.)  
Executed in 2021.

\$40,000-60,000



115

**ALLISON ZUCKERMAN (B. 1990)**  
*Memory Room*

signed and dated 'Allison Zuckerman 2020' (on the stretcher)  
acrylic and archival CMYK ink on canvas  
84 x 68 in. (213.4 x 172.7 cm.)  
Executed in 2020.

\$70,000-100,000

116

**JORDY KERWICK (B. 1982)**  
*Untitled*

signed and dated 'Jordy Kerwick 2021' (on the reverse)  
oil on canvas  
39¾ x 31¾ in. (100 x 80 cm.)  
Painted in 2021.

\$30,000-50,000



117

**SCOTT KAHN (B. 1946)**  
*The Daniels' Garden at L'Angle D'Oie*

signed and dated 'Scott Kahn '00' (lower right); signed again twice,  
inscribed, titled and dated again twice 'THE DANIELS' GARDEN AT  
L'ANGLE D'OIE KAHN 2000 © 2000 by Scott Kahn' (on the overlap)  
oil on canvas  
16 x 20 in. (40.6 x 50.8 cm.)  
Painted in 2000.

\$75,000-95,000



118

**SCOTT KAHN (B. 1946)**  
*Pennsylvania New Jersey Border*

signed and dated 'Scott Kahn '93' (lower right); signed again twice,  
titled and dated again twice 'PENNSYLVANIA NEW JERSEY  
BORDER KAHN 1993 © 1993 by Scott Kahn' (on the overlap)  
oil on canvas  
36 x 40 in. (91.4 x 101.6 cm.)  
Painted in 1993.

\$150,000-200,000





119

**MATTHEW WONG (1984-2019)**

*Mili's Corner*

signed in Chinese, titled and dated in Chinese  
'Mili's Corner' (on the reverse)  
oil on canvas  
24 x 20 in. (61 x 50.8 cm.)  
Painted in 2019.

\$380,000-450,000

122

**WAYNE THIEBAUD (1920-2021)**

*Downhill Intersection*

incised with the artist's signature and date 'Thiebaud 10' (lower left);  
signed again and dated again 'Thiebaud 2010' (on the reverse)  
oil on board  
16 7/8 x 14 in. (42.9 x 35.6 cm.)  
Painted in 2010.

\$800,000-1,200,000



120

**HELEN FRANKENTHALER (1928-2011)**

*Crete*

signed 'Frankenthaler' (lower right)  
acrylic and marker on canvas  
86 x 133 in. (218.4 x 337.8 cm.)  
Painted in 1973.

\$1,500,000-2,000,000

ART FOR VACCINES: PROPERTY SOLD TO BENEFIT CARE'S GLOBAL  
COVID-19 RESPONSE

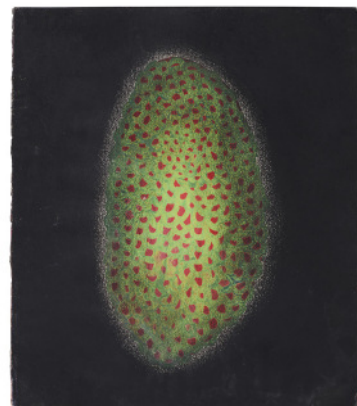
123

**ROY LICHTENSTEIN (1923-1997)**

*Collage for CARE Poster*

signed and dated 'rf Lichtenstein '93' (on the reverse)  
acrylic, tape and printed paper collage on board  
image: 39 3/4 x 27 in. (101 x 68.6 cm.)  
sheet: 52 x 38 1/2 in. (132.1 x 96.8 cm.)  
Executed in 1993.

\$200,000-300,000



121

**YAYOI KUSAMA (B. 1929)**

*Flower*

signed, inscribed, titled and dated 'YAYOI KUSAMA 1953.A FLOWER'  
(on the reverse)  
pastel on paper  
14 1/2 x 12 1/2 in. (36.8 x 31.8 cm.)  
Executed in 1953.

\$120,000-180,000

124

**JEFF KOONS (B. 1955)**

*Jim Beam - Caboose*

stainless steel and bourbon, in two parts  
8 x 14 1/2 x 6 1/2 in. (20.3 x 36.8 x 16.5 cm.)  
Executed in 1986. This work is the artist's proof aside from an edition  
of three plus one artist's proof and is accompanied by a certificate of  
authenticity signed by the artist.

\$700,000-1,000,000







°125

**ROY LICHTENSTEIN (1923-1997)**

*Head with Braids*

signed and dated '© rf Lichtenstein '79' (on the reverse)  
oil and Magna on canvas  
50 x 40 in. (127 x 101.6 cm.)  
Painted in 1979.

\$2,000,000-3,000,000

PROPERTY FROM AN IMPORTANT PRIVATE COLLECTION

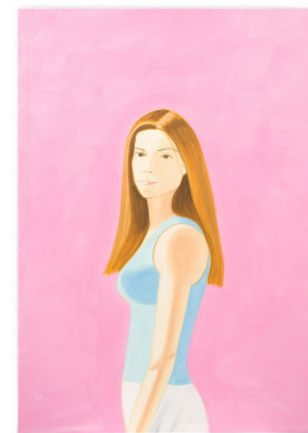
128

**ALEX KATZ (B. 1927)**

*Kristen*

signed and dated 'Alex Katz 05' (on the overlap)  
oil on linen  
84 x 60 in. (213.4 x 152.4 cm.)  
Painted in 2005.

\$300,000-500,000



126

**ANDY WARHOL (1928-1987)**

*Marilyn Monroe (Marilyn)*

signed and stamp-numbered 'Andy Warhol 108/250'  
(on the reverse of each sheet)  
screenprint in colors on paper, in ten parts  
each: 36 x 36 in. (91.4 x 91.4 cm.)  
Executed in 1967. This complete set is number 108  
from an edition of 250.

\$1,500,000-2,500,000

129

**JOHN WESLEY (1928-2022)**

*Untitled*

signed and dated 'John Wesley 2011' (on the reverse)  
acrylic on canvas  
44 x 66 in. (111.8 x 167.6 cm.)  
Painted in 2011.

\$100,000-150,000



°127

**ANDY WARHOL (1928-1987)**

*Dollar Sign*

stamped with the Estate of Andy Warhol and the Andy Warhol  
Foundation for the Visual Arts, Inc. stamps and numbered 'PA30.086'  
(on the overlap); stamped with the Andy Warhol Foundation for the  
Visual Arts, Inc. stamp again (on the reverse)  
acrylic and silkscreen ink on canvas  
20 x 16 in. (50.8 x 40.6 cm.)  
Painted in 1981.

\$400,000-600,000

PROPERTY FROM A NEW YORK CHARITABLE FAMILY TRUST

°130

**ROGER BROWN (1941-1997)**

*Cloud Cover*

titled 'CLOUD COVER' (on the overlap)  
oil on canvas  
72 x 47 1/2 in. (182.9 x 121.3 cm.)  
Painted in 1979.

\$60,000-80,000





131

**ANDY WARHOL (1928-1987)**

*Campbell's Soup*

signed and dated 'Andy Warhol 86' (on the overlap)  
acrylic and silkscreen ink on canvas  
72 x 60 in. (182.9 x 152.4 cm.)  
Painted in 1986.

\$400,000-600,000

PROPERTY FROM AN IMPORTANT PRIVATE COLLECTION

134

**JOHN BALDESSARI (1931-2020)**

*Two Cars (One Red) in Different Environments*

acrylic and vinyl on photographs, in two parts  
69 x 87 in. (175.3 x 221 cm.)  
Executed in 1990.

\$300,000-500,000



132

**WAYNE THIEBAUD (1920 - 2021)**

*Jawbreaker Machine*

signed and dated '♥ Thiebaud 1990' (lower right)  
pastel over linocut on paper  
image: 21½ x 16 in. (54.6 x 40.6 cm.)  
sheet: 30¾ x 22½ in. (30.3 x 22.5 cm.)  
Executed in 1990. This work is a unique hand-colored artist's proof  
aside from an edition of fifty.

\$350,000-550,000

PROPERTY FROM AN IMPORTANT PRIVATE COLLECTION

135

**JAMES ROSENQUIST (1933-2017)**

*Untitled*

signed and dated "JAMES ROSENQUIST 1981" (on the reverse)  
oil on canvas mounted on panel  
40 x 40 in. (101.6 x 101.6 cm.)  
Painted in 1981.

\$250,000-350,000



133

**ALEX KATZ (B. 1927)**

*Man with Brown Hat*

signed and dated 'alex katz 2/79' (on the overlap)  
oil on canvas  
96 x 72 in. (243.8 x 182.9 cm.)  
Painted in 1979.

\$700,000-1,000,000

136

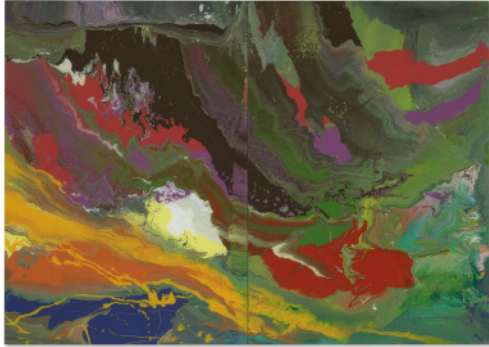
**FRANK STELLA (B. 1936)**

*Hagmatana I*

acrylic and graphite on shaped canvas  
120 x 180 in. (304.8 x 457.2 cm.)  
Painted in 1967.

\$700,000-1,000,000





137

**GERHARD RICHTER (B. 1932)**

*Flow (933-1)*

signed, inscribed and dated '933-1 Richter 2013' (on the reverse)  
diptych—lacquer on glass mounted on Alu Dibond  
47¼ x 67 in. (120 x 170.2 cm.)  
Executed in 2013.

\$500,000-700,000

PROPERTY FROM AN IMPORTANT EUROPEAN PRIVATE COLLECTION

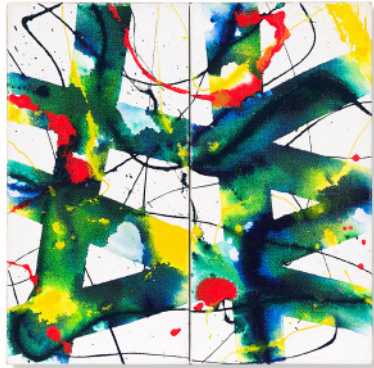
140

**ALEXANDER CALDER (1898-1976)**

*Untitled*

incised with the artist's monogram and date 'CA 70'  
(on the standing element)  
standing mobile—sheet metal, wire and paint  
22¾ x 27 x 24 in. (57.8 x 68.6 x 61 cm.)  
Executed in 1970.

\$450,000-650,000



PROPERTY FROM AN IMPORTANT PRIVATE COLLECTION

138

**SAM FRANCIS (1923-1994)**

*Untitled*

signed and dated 'Sam Francis 1988' (on the reverse of the left panel)  
diptych—acrylic on canvas  
overall: 24 x 24 in. (61 x 61 cm.)  
Painted in 1988.

\$60,000-80,000

PROPERTY OF AN IMPORTANT AMERICAN COLLECTION

141

**ERNIE BARNES (1938 - 2009)**

*Storm Dance*

signed 'ERNIE BARNES' (lower right)  
acrylic on canvas, in artist's frame  
48¾ x 24¾ in. (123.8 x 62.9 cm.)  
Painted in 1977.

\$100,000-150,000



PROPERTY FROM AN IMPORTANT PRIVATE COLLECTION

139

**SAM FRANCIS (1923-1994)**

*Untitled*

signed twice 'Sam Francis Sam Francis' and stamped with the  
Estate of Sam Francis stamp (on the reverse); numbered SFP.65.28'  
(on the overlap)  
acrylic on canvas  
60 x 70 in. (152.4 x 177.8 cm.)  
Painted in 1965.

\$200,000-300,000

142

**CHARLES WHITE (1918-1979)**

*Study for 'The Contribution of the Negro to  
Democracy in America'*

signed and dated 'Charles White '43' (lower right)  
tempera and graphite on illustration board  
17¾ x 26¼ in. (44.7 x 66.7 cm.)  
Executed in 1943.

\$600,000-800,000





PROPERTY FROM THE COLLECTION OF HURDLE H. LEA

143

**ROMARE BEARDEN (1911-1988)**

*Profile/Part I, The Twenties: Mecklenburg County, Liza in High Cotton*

signed 'Romare Bearden' (upper left); inscribed 'I couldn't play with liza yesterday her grandmother said she was in the fields.' (on the reverse)  
acrylic, watercolor, ink, graphite, printed paper and fabric collage on board  
17½ x 32¾ in. (44.5 x 83.2 cm.)  
Executed in 1978.

\$250,000-350,000

146

**CRAIG KAUFFMAN (1932-2010)**

*Untitled*

incised with the artist's initials and date 'CRAIG KAUFFMAN 66' (on the reverse)  
acrylic lacquer on vacuum formed Plexiglas  
66½ x 35½ x 5 in. (168.9 x 90.2 x 12.7 cm.)  
Executed in 1966.

\$50,000-70,000



COOL  
PROPERTY FROM  
THE LORNA LEE STEARNS COLLECTION



144

**ED RUSCHA (B. 1937)**

*Western with Fly*

signed, inscribed and dated 'E. RUSCHA 1967 - gp' (lower left)  
gunpowder on paper  
14¼ x 22¾ in. (35.9 x 58.1 cm.)  
Executed in 1967.

\$400,000-600,000

147

**BILLY AL BENGSTON (B. 1934)**

*The Mild One*

signed and dated 'Bengston 1963' (on the reverse)  
oil and sprayed lacquer on Masonite  
62½ x 49 in. (158.8 x 124.5 cm.)  
Painted in 1963.

\$50,000-70,000



145

**LARRY BELL (B. 1939)**

*Untitled Glass Sculpture (Clear/Silver)*

coated glass and metal, with Plexiglas base  
cube: 10¼ x 10¼ x 10¼ in. (26 x 26 x 26 cm.)  
base: 48 x 10¼ x 10¼ in. (121.9 x 26 x 26 cm.)  
overall: 58¼ x 10¼ x 10¼ in. (148 x 26 x 26 cm.)  
Executed in 1965.

\$50,000-70,000

~148

**EDWARD KIENHOLZ (1927-1994)**

*Marlena Deepdich or a Portable Success Story*

incised with the title 'MARLENA DEEPDICH OR A PORTABLE SUCCESS STORY' (on a metal plaque affixed to the base)  
box assemblage - wood, oil, canvas, nails, plastic and sheep's head  
open: 24 x 35 x 11 in. (61 x 88.9 x 27.9 cm.)  
closed: 24 x 17 x 11 in. (61 x 43.2 x 27.9 cm.)  
Executed in 1961.

\$20,000-30,000





149

**KENNETH PRICE (1935-2012)**

*Untitled*

painted and glazed ceramic  
3¼ x 6 x 3½ in. (8.3 x 15.2 x 8.9 cm.)  
Executed circa 1966-1970.

\$4,000-6,000



150

**RON NAGLE (B. 1939)**

*Untitled*

painted and glazed ceramic  
3¾ x 4 x 3½ in. (9.2 x 10.2 x 7.9 cm.)  
Executed in 1975.

\$6,000-8,000



151

**KENNETH PRICE (1935-2012)**

*Kauai Rock Cup*

signed, titled and dated "'KAUAI ROCK CUP" PRICE '70' (lower right)  
acrylic, colored pencil and ink on paperboard  
22 x 18 in. (55.9 x 45.7 cm.)  
Executed in 1970.

\$15,000-20,000

152

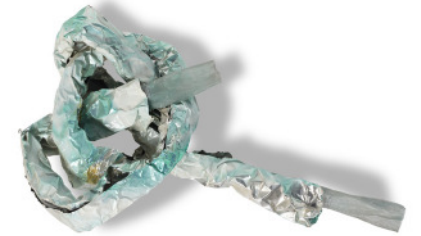
**LYNDA BENGLIS (B. 1941)**

*Klaus*

aluminum wire mesh, aluminum foil and enamel

53 x 18 x 12 in. (134.6 x 45.7 x 30.5 cm.)  
Executed in 1974.

\$70,000-100,000



153

**LYNDA BENGLIS (B. 1941)**

*Dill*

aluminum wire mesh, aluminum foil, sparkles, sculp-metal and lacquer

53½ x 19 x 15 in. (135.9 x 48.3 x 38.1 cm.)  
Executed in 1974.

\$60,000-80,000



PROPERTY FROM AN IMPORTANT PRIVATE COLLECTION

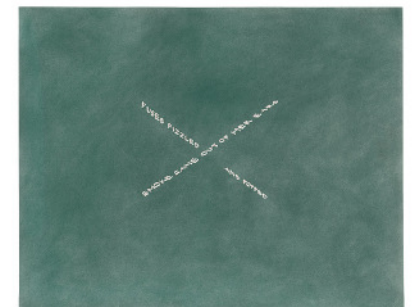
154

**ED RUSCHA (B. 1937)**

*Smoke Came Out of Her Ears, Fuses Fizzled  
and Popped*

signed and dated 'Edward Ruscha 1976' (on the reverse)  
pastel on paper  
22¾ x 28½ in. (57.8 x 72.7 cm.)  
Executed in 1976.

\$300,000-500,000





155

**RICHARD SERRA (B.1938)**

*Rondo*

paintstick on handmade paper  
40 x 40 in. (101.6 x 101.6 cm.)  
Executed in 2007.

\$600,000-800,000

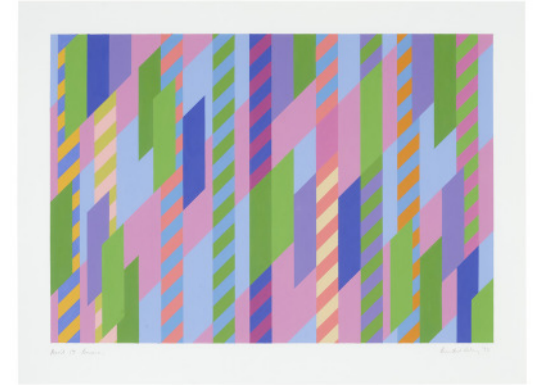
158

**BRIDGET RILEY (B. 1931)**

*April 17 Bassacs '95*

signed, titled and dated 'April 17 Bassacs Bridget Riley '95'  
(lower edge)  
gouache on paper  
26 x 34¼ in. (66 x 87 cm.)  
Painted in 1995.

\$180,000-250,000



156

**ELLSWORTH KELLY (1923-2015)**

*Untitled - Green with Red*

signed 'Kelly' (lower right)  
tempera on paper  
30½ x 21½ in. (76.5 x 54.6 cm.)  
Painted circa 1964-1965.

\$150,000-200,000

159

**RUDOLF STINGEL (B. 1956)**

*Untitled*

oil and enamel on linen  
110 x 71 in. (280 x 180 cm.)  
Painted in 1989.

\$500,000-700,000



◆157

**DONALD JUDD (1928-1994)**

*Untitled*

stamped 'DONALD JUDD 91-173 © ALUMINIUM AG MENZIKEN'  
(on the reverse)  
clear anodized aluminum with transparent green Plexiglas  
9¾ x 39¾ x 9¾ in. (25 x 100 x 25 cm.)  
Executed in 1991.

\$450,000-650,000



160

**LYNDA BENGLIS (B. 1941)**

*Ruxton*

bronze wire mesh, sprayed zinc, bronze and nickel-chrome plating  
51 x 30 x 8 in. (129.54 x 76.2 x 20.32 cm)  
Executed in 1985.

\$200,000-300,000





PROPERTY FROM A PRIVATE AMERICAN COLLECTION

161

**RONI HORN (B. 1955)**

*When Dickinson Shut Her Eyes, no. 886*

stamped with the number '886' (at one end of each element)  
 plastic and aluminum, in eight parts  
 each ranging from: 20% x 2 x 2 in. (52.3 x 5.1 x 5.1 cm.) to 54% x 2 x 2 in.  
 (138.6 x 5.1 x 5.1 cm.)  
 (overall installation dimensions variable)  
 Executed in 1993. This work is from an edition of three.

\$180,000-250,000



PROPERTY FROM A NEW YORK CHARITABLE FAMILY TRUST

°162

**MCARTHUR BINION (B. 1946)**

*DNA Study: III*

ink, laser print collage, oilstick and Staonal crayon on panel  
 96 x 72 in. (243.8 x 182.9 cm.)  
 Executed in 2014.

\$80,000-120,000



PROPERTY FROM AN IMPORTANT PRIVATE COLLECTION

163

**JACQUELINE HUMPHRIES (B. 1960)**

*Untitled*

oil and enamel on linen  
 38 x 40 in. (96.5 x 101.6 cm.)  
 Painted in 2012.

\$70,000-100,000

PROPERTY FROM A NEW YORK CHARITABLE FAMILY TRUST

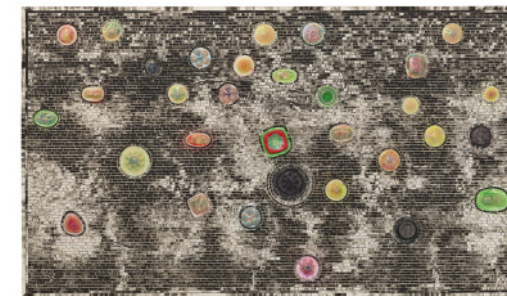
°164

**JACK WHITTEN (1939-2018)**

*Cultural Shift (Let's Celebrate Lena Horne) A.K.A. The Lena Horne Jubilee*

signed, titled and dated 'CULTURAL SHIFT (LET'S CELEBRATE LENA HORNE) (A.K.A. THE LENA HORNE JUBILEE) MAY 2010 JACK WHITTEN' (on the reverse)  
 acrylic and Styrofoam plates on canvas  
 48% x 82% in. (122.3 x 208.6 cm.)  
 Executed in 2010.

\$700,000-1,000,000



165

**LUCAS SAMARAS (B. 1936)**

*Box #40*

wood box construction— paint, yarn, mirror, tacks, nails  
 and photograph  
 dimensions variable  
 open: 14 x 40% x 12 1/4 in. (35.6 x 101.9 x 31.1 cm.)  
 closed: 14 x 16% x 12% in. (35.6 x 41.3 x 31.1 cm.)  
 Executed in 1965.

\$180,000-250,000



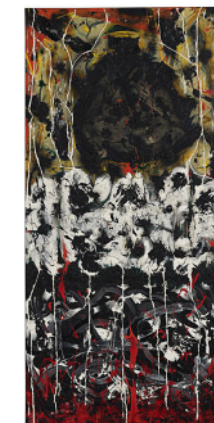
166

**ALFONSO OSSORIO (1901-1985)**

*Nevertheless*

signed twice, titled, inscribed and dated 'Alfonso Ossorio 7 Going Downs "Nevertheless" 19. IX '58 No. 17. '58 A.O.' (on the reverse)  
 oil on canvas  
 76 x 38 in. (193 x 96.5 cm.)  
 Painted in 1957-1958.

\$200,000-300,000





167

**BEAUFORD DELANEY (1901-1979)***Untitled*

signed, inscribed, dedicated and dated 'Beauford Delaney Paris 1967  
For Mme Mary Callery with friendship' (on the reverse)  
oil on canvas  
16½ x 10½ in. (41 x 27 cm.)  
Painted in 1967.

\$70,000-100,000



168

**LYNDA BENGLIS (B. 1941)***Shareer*

gold leaf, oil-based size, gesso, plaster, cotton and chicken wire  
33 x 28 x 15 in. (83.8 x 71.1 x 38.1 cm.)  
Executed in 1980.

\$80,000-120,000



169

**LYNDA BENGLIS (B. 1941)***Aquanot #33*

signed and dated 'Benglis 80' (on the reverse)  
gouache and cast pigmented paper construction  
48 x 32 x 6 in. (121.9 x 81.3 x 15.2 cm.)  
Executed in 1980.

\$40,000-60,000

170

**CLAES OLDENBURG (B. 1929)***Alphabet/Good Humor Side B*

wax crayon and graphite on paper  
35 x 25 in. (88.9 x 63.5 cm.)  
Executed in 1974.

\$70,000-90,000



171

**CLAES OLDENBURG (B. 1929)***Alphabet/Good Humor*

incised with the artist's signature 'Oldenburg' (on the base); stamped  
with the artist's signature, title, number and date 'ALPHABET / GOOD  
HUMOR 7/12 © 1975 CLAES OLDENBURG' (on the base)  
painted fiberglass, with bronze base

35½ x 20 x 11½ in. (90.2 x 50.8 x 28.3 cm.)  
Executed in 1975. This work is number seven from an edition of twelve.

\$250,000-350,000



172

**JASPER JOHNS (B. 1930)***0 through 9*

signed, inscribed and dated 'ST. MARTIN 18 FEB J. JOHNS '79'  
(lower edge)  
ink on plastic  
12 x 10¾ in. (30.48 x 27.31 cm.)  
Executed in 1979.

\$1,000,000-1,500,000







173

**JOHN CHAMBERLAIN (1927-2011)**

*Tonk #15-86*

painted steel  
10¼ x 21¼ x 14½ in. (26 x 54 x 36.8 cm.)  
Executed in 1986.

\$100,000-150,000

176

**AD REINHARDT (1913-1967)**

*Untitled*

signed and dated 'Ad Reinhardt 1946' (on the stretcher)  
oil on canvas  
50 x 20 in. (127 x 50.8 cm.)  
Painted in 1946.

\$800,000-1,200,000



174

**SOL LEWITT (1928-2007)**

*Horizontal Lines in Black and Gray*

gouache on paper  
30 x 60 in. (76.2 x 152.4 cm.)  
Executed in 2004.

\$40,000-60,000

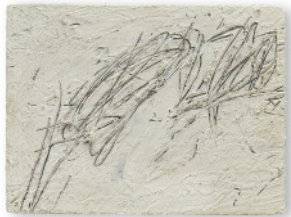
177

**SOL LEWITT (1928-2007)**

*Splotch #19*

fiberglass  
68 x 68 x 68 in. (172.7 x 172.7 x 172.7 cm.)  
Executed in 2005.

\$70,000-90,000



175

**CY TWOMBLY (1928-2011)**

*Untitled (Rome)*

white lead and lead pencil on panel  
7 x 9¾ in. (17.8 x 23.8 cm.)  
Painted in 1957.

\$150,000-200,000

178

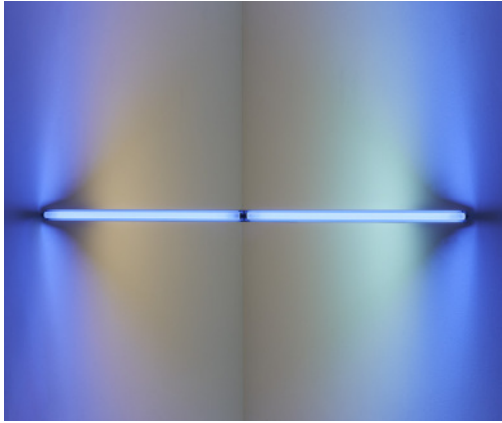
**RON GORCHOV (1930-2020)**

*Gossip*

signed, titled and dated twice 'GOSSIP 1976 © RON GORCHOV 1976'  
(on the stretcher)  
oil on shaped canvas  
29 x 15 in. (73.7 x 38.1 cm.)  
Painted in 1976.

\$15,000-20,000





179

**DAN FLAVIN (1933-1996)**

*Untitled*

blue, daylight, cool white and warm white fluorescent light  
width: 96 in. (244 cm.)  
Executed in 1969. This work is number one from an edition of five,  
of which two were fabricated, and is accompanied by a certificate of  
authenticity signed by the artist.

\$250,000-350,000

182

**CLAES OLDENBURG (B. 1929)**

*Tomb Design for Marilyn Monroe - Second Version*

signed with the artist's initials and dated 'C.O. 75' (lower right)  
watercolor, wax crayon and graphite on paper  
40 x 30 in. (101.6 x 76.2 cm.)  
Executed in 1975.

\$40,000-60,000



180

**ANDY WARHOL (1928-1987)**

*The Men in Her Life (Mike Todd and Eddie Fisher)*

signed 'Andy Warhol' (on the overlap)  
silkscreen ink, graphite and watercolor on canvas  
13 x 80 in. (33 x 203.2 cm.)  
Executed in 1962.

\$200,000-300,000

183

**MARTIN PURYEAR (B. 1941)**

*Lurk*

painted pine  
21¼ x 61¼ x 7¼ in. (55.3 x 155.6 x 18.4 cm.)  
Executed in 1984.

\$400,000-600,000



181

**JOHN BALDESSARI (1931-2020)**

*Midget and Leaping Cat (Version 1)*

black and white photograph  
36 x 48 in. (91.4 x 121.9 cm.)  
Executed in 1984.

\$100,000-150,000

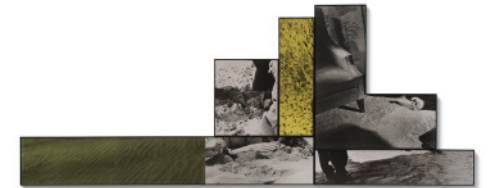
184

**JOHN BALDESSARI (1931-2020)**

*Oasis*

black-and-white photograph with oil tint, in six parts  
55 x 144 in. (139.7 x 365.8 cm.)  
Executed in 1988.

\$250,000-350,000





185

**JOHN CHAMBERLAIN (1927-2011)**

*Trumpery Praxis*

painted and chromium-plated steel, in two parts  
126 x 69 x 46 in. (320 x 175.3 x 116.8 cm.)  
Executed in 1984.

\$400,000-600,000



188

**CLAES OLDENBURG (B. 1929)**

*Knife Slicing Through the Wall*

stainless steel  
72 x 144 in. (182.9 x 365.8 cm.)  
Executed in 1989.

\$300,000-500,000



186

**CLAES OLDENBURG (B. 1929)**

*3-Way plug, Scale C, Soft*

zipper, string, lead, acrylic and graphite on sewn canvas construction,  
with artist's base and Plexiglas vitrine  
40¼ x 25 x 24¾ in. (102.2 x 63.5 x 62.9 cm.)  
Executed in 1970.

\$120,000-180,000

189

**TERRY WINTERS (B. 1949)**

*Caps, Stems, Gills*

signed, titled and dated 'Terry Winters Caps, Stems, Gills, 1982'  
(on the stretcher)  
oil on canvas  
60 x 84 in. (152.4 x 213.4 cm.)  
Painted in 1982.

\$50,000-70,000



187

**SARAH CHARLESWORTH (1947-2013)**

*Leaf Frame*

Fuji Crystal Archive print  
40 x 31½ in. (101.6 x 80.3 cm.)  
Executed in 2002. This work is number two from an edition of eight.

\$8,000-12,000

190

**DAVID SMITH (1906-1965)**

*Untitled*

oil on Masonite  
10 x 8 in. (25.4 x 20.3 cm.)  
Painted in 1957.

\$30,000-50,000





191

**HANNAH WILKE (1940-1993)***Untitled*

painted ceramic  
3¼ x 6¾ x 3½ in. (8.3 x 17.2 x 8.9 cm.)  
Executed in 1972.

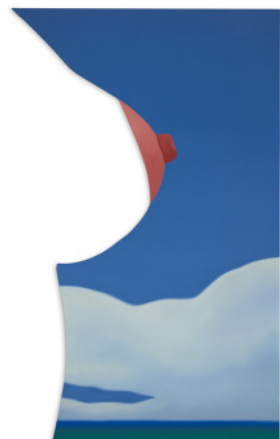
\$6,000-8,000

°194

**CINDY SHERMAN (B. 1954)***Untitled*

signed, numbered and dated 'Cindy Sherman 1/10 1981'  
(on a paper label affixed to the reverse)  
chromogenic color print  
24 x 48 in. (61 x 121.9 cm.)  
Executed in 1981. This work is number one from an edition  
of ten plus two artist's proofs.

\$400,000-600,000



192

**TOM WESSELMANN (1931-2004)***Seascape #29*

signed and dated 'Wesselmann 67' (on the overlap); signed again,  
titled and dated again 'TOM WESSELMANN 1967 SEASCAPE #29'  
(on the stretcher)  
oil on shaped canvas  
108½ x 67¼ in. (275.6 x 170.8 cm.)  
Painted in 1967.

\$1,200,000-1,800,000

°195

**JOYCE PENSATO (1941-2019)***Mr. Softy*

signed, inscribed, titled and dated 'TITLED: "MR SOFTY"  
Joyce Pensato 2008' (on the reverse)  
enamel and metallic paint on canvas  
68 x 54 in. (172.1 x 137.2 cm.)  
Painted in 2008.

\$70,000-90,000



PROPERTY FROM AN IMPORTANT PRIVATE COLLECTION

193

**BARBARA KRUGER (B. 1945)***GO/STAY*

diptych—chromogenic dye coupler print  
overall: 73¾ x 98¾ in. (186.5 x 251 cm.)  
Executed in 2007. This work is number five from an edition of ten.

\$200,000-300,000

196

**JEAN-MICHEL BASQUIAT (1960-1988)***Untitled*

signed with the artist's initials 'JMB ©' (on the reverse of the sheet)  
acrylic, oilstick and wax crayon on paper laid down on canvas  
25½ x 19¼ in. (64.8 x 50.2 cm.)  
Executed in 1981. This work is accompanied by a photo certificate and  
a certificate issued by the Authentication Committee for the Estate of  
Jean-Michel Basquiat.

\$500,000-700,000





197

**ED RUSCHA (B. 1937)**

*Affiliation*

signed and dated 'Ed Ruscha 1987' (on the reverse); signed again, titled and dated again 'ED RUSCHA "AFFILIATION" 1987' (on the stretcher) acrylic on canvas  
60 x 105 in. (152.4 x 266.7 cm.)  
Painted in 1987.

\$600,000-800,000



PROPERTY FROM AN IMPORTANT PRIVATE COLLECTION

198

**GEORGE CONDO (B. 1957)**

*French Maid with Red Hair*

signed, titled and dated 'Condo 05 French Maid with Red Hair' (on the reverse)  
oil on canvas, in artist's frame  
17 1/4 x 15 1/2 in. (43.8 x 38.4 cm.)  
Painted in 2005.

\$100,000-150,000



PROPERTY FROM A PROMINENT COLLECTION

199

**MARK TANSEY (B. 1949)**

*Study on "Installing the Lens"*

signed and dated 'Tansey 2000' (upper right)  
oil and graphite on canvas  
36 1/2 x 30 in. (91.8 x 76.2 cm.)  
Executed in 2000.

\$700,000-1,000,000

200

**JEAN-MICHEL BASQUIAT (1960-1988)**

*Untitled*

signed and dated 'Basquiat 86' (on the reverse)  
oilstick and wax crayon on paper  
24 x 36 in. (61 x 91.4 cm.)  
Executed in 1986. This work is accompanied by a certificate of authenticity issued by the Authentication Committee of the Estate of Jean-Michel Basquiat.

\$400,000-600,000



PROPERTY FROM THE ESTATE OF MARCIA MAY

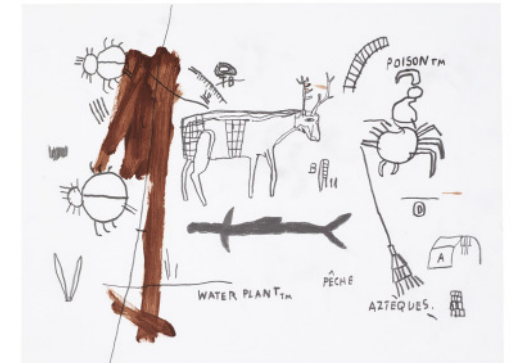
201

**JEAN-MICHEL BASQUIAT (1960-1988)**

*Untitled*

acrylic and graphite on paper  
9 1/2 x 12 1/2 in. (24.1 x 31.8 cm.)  
Executed circa 1985.

\$120,000-180,000



PROPERTY FROM THE ESTATE OF MARCIA MAY

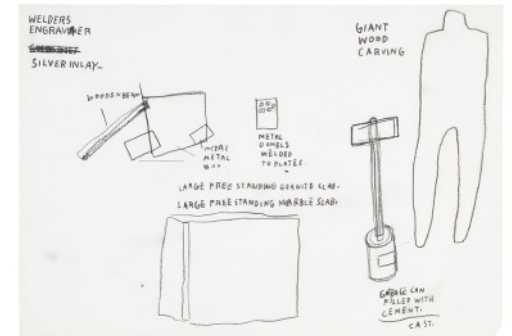
202

**JEAN-MICHEL BASQUIAT (1960-1988)**

*Untitled*

graphite on paper  
9 3/4 x 14 in. (24.8 x 35.6 cm.)  
Executed circa 1985.

\$120,000-180,000





203

**GERTRUDE ABERCROMBIE (1909-1977)**

*White Horse*

signed 'Abercrombie' (lower right)  
oil on Masonite  
3 $\frac{3}{8}$  x 2 $\frac{1}{2}$  in. (22 x 20 cm.)  
framed: 5 $\frac{1}{2}$  x 6 $\frac{1}{2}$  in. (14 x 16.5 cm.)  
Painted in 1939.

\$30,000-50,000



204

**LOUIS FRATINO (B.1993)**

*Tristan Drinking Soup*

signed and dated 'Louis Fratino 2017' (on the reverse)  
oil, wax crayon and graphite on canvas  
12 x 9 in. (30.5 x 22.9 cm.)  
Executed in 2017.

\$50,000-70,000



205

**ROBY DWI ANTONO (B. 1990)**

*Sense of Aurora*

signed and dated 'Roby Dwi Antono 2013' (lower left)  
oil on canvas  
70 $\frac{3}{4}$  x 47 $\frac{1}{4}$  (180 x 120 cm.)  
Painted in 2013.

\$60,000-100,000

206

**SALMAN TOOR (B. 1983)**

*Untitled*

oil on canvas  
58 x 56 $\frac{1}{2}$  in. (147.3 x 143.5 cm.)  
Painted in 2014.

\$180,000-250,000



207

**DANA SCHUTZ (B. 1976)**

*Myopic*

signed and dated 'Dana Schutz 2004' (on the reverse)  
oil on canvas  
23 $\frac{1}{8}$  x 18 in. (58.7 x 45.7 cm.)  
Painted in 2004.

\$70,000-90,000



208

**RASHID JOHNSON (B. 1977)**

*First Friends*

burned red oak flooring, black soap, wax and spray enamel  
72 $\frac{1}{2}$  x 49 $\frac{1}{2}$  x 3 in. (184.2 x 125.7 x 7.6 cm.)  
Executed in 2013.

\$150,000-200,000





209

**AMY SILLMAN (B. 1955)**

*Platypus*

signed and dated 'Amy Sillman 09' (on the reverse)  
oil on canvas  
90¼ x 84¾ in. (230.5 x 215.3 cm.)  
Painted in 2009.

\$350,000-550,000

PROPERTY FROM AN IMPORTANT PRIVATE COLLECTION

212

**YOSHITOMO NARA (B. 1959)**

*I Think, Therefore I Am...A Dog*

acrylic and lacquer on fiberglass, wood and steel  
83 x 53 x 37 in. (210.8 x 134.6 x 94 cm.)  
Executed in 2003. This work is from an edition of six plus  
two artist's proofs.

\$250,000-350,000



210

**ENIWAMURA (B. 1988)**

*Neo-Jomon: Wild Hair (After Quarantine)*

signed 'EN' (on the underside)  
glazed ceramic  
23¾ x 19¾ x 20¾ in. (59.9 x 50.2 x 53 cm.)  
Executed in 2020. This work is unique.

\$20,000-30,000

PROPERTY FROM AN IMPORTANT PRIVATE COLLECTION

213

**YOSHITOMO NARA (B. 1959)**

*Slash with a Knife*

colored pencil on paper  
11 x 8 in. (27.9 x 20.3 cm.)  
Executed in 1998.

\$100,000-150,000



211

**TAKASHI MURAKAMI (B. 1962) AND VIRGIL ABLOH (1980-2021)**

*DOB and Arrows: Patchwork Skulls*

signed and dated "'VIRGIL' TAKASHI 2018' (on the overlap)  
acrylic on canvas  
33¾ x 23 in. (85.7 x 58.4 cm.)  
Painted in 2018.

\$60,000-80,000

PROPERTY FROM AN IMPORTANT PRIVATE COLLECTION

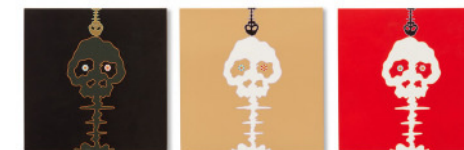
214

**TAKASHI MURAKAMI (B. 1962)**

*Dokuro Black; Dokuro Gold & Dokuro Red (Three Works)*

signed and dated 'TAKASHI. 2001' (on the reverse of each element)  
acrylic on canvas laid down on panel, in three parts  
each: 15.9 x 15.9 in. (40.3 x 40.3 cm.)  
Executed in 2001.

\$150,000-200,000





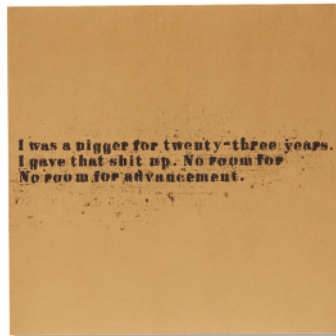
215

**SUSUMU KAMIJO (B. 1975)**

*Poodle by Purple Sea*

signed and dated 'Susumu Kamiyo 2017' (on the reverse)  
oilstick, pastel and graphite on paper  
50 x 38 in. (127 x 96.5 cm.)  
Executed in 2017.

\$20,000-30,000



PROPERTY FROM AN IMPORTANT PRIVATE COLLECTION

216

**GLENN LIGON (B. 1960)**

*No Room (Gold) #47*

signed, titled and dated 'Glenn Ligon 2007 No Room (Gold) #47'  
(on the overlap)  
oil and acrylic on canvas  
32 x 32 in. (81.3 x 81.3 cm.)  
Executed in 2007.

\$100,000-150,000



PROPERTY FROM AN IMPORTANT PRIVATE COLLECTION

217

**BRIAN CALVIN (B. 1969)**

*Believing*

signed, titled and dated 'Brian Calvin 2005 "BELIEVING"  
(on the reverse)  
acrylic on canvas  
24 x 48 in. (61 x 121.9 cm.)  
Painted in 2005.

\$30,000-40,000

218

**SHARA HUGHES (B. 1981)**

*Rockstar*

signed 'SHARA HUGHES' (lower right); signed again, inscribed and dated 'Shara Hughes 2005 Georgia' (on the reverse)  
oil on canvas  
48 x 48 in. (121.9 x 121.9 cm.)  
Painted in 2005.

\$150,000-200,000



219

**ABOUDIA (B.1983)**

*Untitled*

oil on canvas  
59 x 59 in. (149.9 x 149.9 cm.)  
Painted in 2018.

\$40,000-60,000



220

**ISSHAQ ISMAIL (B. 1989)**

*Violet Face 5*

signed 'Isshaq' (lower left)  
acrylic on canvas  
59½ x 49½ in. (151.5 x 125.8 cm.)  
Painted in 2021.

\$60,000-80,000







221

**LINCOLN TOWNLEY (B. 1972)**

*The Partners*

signed twice and dated 'Lincoln Townley LT 2018' (on the reverse)  
oil on canvas  
23½ x 23½ in. (59.7 x 59.7 cm.)  
Painted in 2018.

\$50,000-70,000



PROPERTY FROM AN IMPORTANT PRIVATE COLLECTION

222

**CARROLL DUNHAM (B. 1949)**

*Group D, No. 10*

inscribed, titled and dated 'Quogue, New York City 1991-1992  
'GROUP D #10'' (on the stretcher)  
acrylic and mixed media on canvas  
49¼ x 62¾ in. (125.1 x 159.7 cm.)  
Executed in 1991-1992.

\$120,000-180,000



223

**KENNY SCHARF (B. 1958)**

*FRACKATTACK*

oil, acrylic, ink and synthetic polymer on canvas,  
in powder coated aluminum artist's frame  
90 x 70 in. (228.6 x 177.8 cm.)  
Executed in 2017.

\$100,000-150,000



224

**GINA BEAVERS (B. 1974)**

*Invisible Lip*

signed and dated 'Gina Beavers 2022' (on the reverse)  
acrylic and foam on linen on panel  
72 x 72 x 12 in. (182.9 x 182.9 x 30.5 cm.)  
Executed in 2022.

\$40,000-60,000

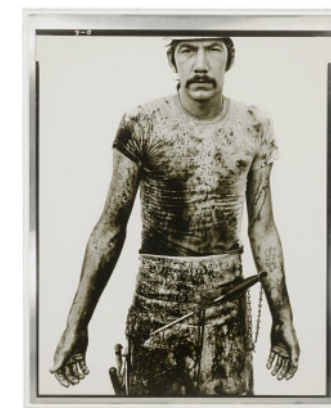
225

**RICHARD AVEDON (1923-2004)**

*Blue Cloud Wright, Slaughterhouse Worker, Omaha, Nebraska, August 10, 1979*

signed and numbered 'Avedon 6/6' and stamped with print, edition  
and copyright credit (on the reverse)  
gelatin silver print mounted to aluminum, in artist's frame  
image/sheet: 56 x 44.5 in. (142.2 x 113 cm.)  
overall: 61½ x 49 x 2½ in. (156.2 x 124.5 x 6.4 cm.)  
Photographed in 1979 and printed in 1985. This work is number six  
from an edition of six plus two artist's proofs.

\$250,000-350,000



226

**CINDY SHERMAN (B. 1954)**

*Untitled B*

signed, numbered and dated 'Cindy Sherman 7/10 1975'  
(on the reverse)  
gelatin silver print  
20 x 16 in. (50.8 x 40.6 cm.)  
Executed in 1975. This work is number seven from an edition  
of ten.

\$25,000-35,000





°227

**CINDY SHERMAN (B. 1954)**

*Untitled E*

signed, inscribed, numbered and dated 'Cindy Sherman E 5/10 1975'  
(on the reverse)  
gelatin silver print  
20 x 16 in. (50.8 x 40.6 cm.)  
Executed in 1975. This work is number five from an edition of ten.

\$30,000-50,000

PROPERTY FROM AN IMPORTANT PRIVATE COLLECTION

230

**IMI KNOEBEL (B. 1940)**

*Grace Kelly*

acrylic and paper collage on board, in thirty-eight parts  
each: 19 x 13 in. (48.3 x 33 cm.)  
Executed in 1989/2005. This work is number three  
from an edition of ten.

\$100,000-150,000



°228

**ROBERT LONGO (B. 1953)**

*Jump to Life to Come*

bronze  
39 x 50 x 22 in. (99.1 x 127 x 55.9 cm.)  
Executed in 1990. This work is unique.

\$80,000-120,000

PROPERTY FROM AN IMPORTANT PRIVATE COLLECTION

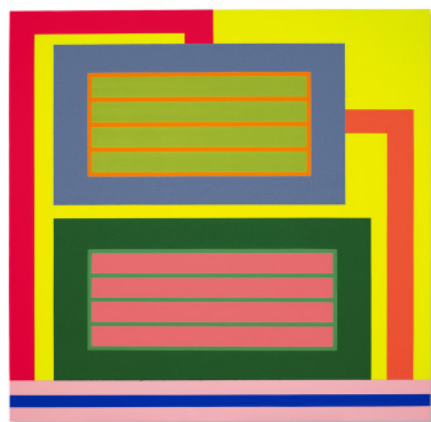
231

**PETER HALLEY (B. 1953)**

*Blue Cell*

acrylic, fluorescent acrylic and Roll-A-Tex on canvas on two  
joined canvases  
44 x 40¾ in. (111.8 x 103.5 cm.)  
Painted in 1998.

\$40,000-60,000



PROPERTY FROM A NEW YORK CHARITABLE FAMILY TRUST

°229

**PETER HALLEY (B. 1953)**

*Accretive Cognition*

signed twice and dated 'Peter Halley Peter Halley 2009'  
(on the reverse)  
acrylic and Roll-A-Tex on two joined canvases  
80 x 82 in. (203.2 x 208.3 cm.)  
Painted in 2009.

\$80,000-120,000

232

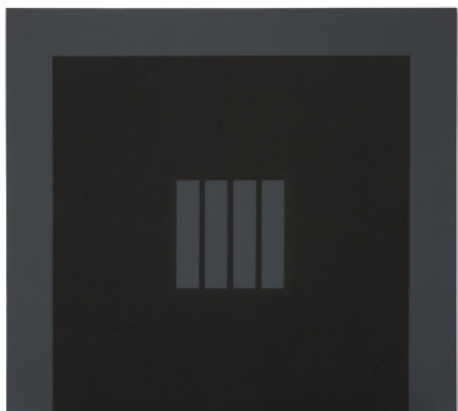
**KENNY SCHARF (B. 1958)**

*Bobby Mandala*

signed and dated 'Kenny Scharf 91-92' (on the reverse)  
oil and silkscreen ink on canvas, in artist's Plexiglas mirror  
and aluminum frame  
72 x 62 in. (182.9 x 157.5 cm.)  
Executed in 1991.

\$100,000-150,000





233

**PETER HALLEY (B. 1953)**

*Prison*

signed twice, titled and dated 'Peter Halley Peter Halley PRISON 1986' (on the reverse)  
acrylic and Roll-A-Tex on canvas  
72½ x 81 in. (184.5 x 206 cm.)  
Painted in 1986.

\$120,000-200,000



PROPERTY FROM AN IMPORTANT PRIVATE COLLECTION

236

**FRANK STELLA (B. 1936)**

*The Dart (D-15-IX)*

enamel and spray enamel on aluminum and magnesium construction  
71½ x 76 x 30 in. (181.6 x 193 x 76.2 cm.)  
Executed in 1990.

\$300,000-500,000



234

**KENNY SCHARF (B. 1958)**

*New and Improved Thermonuclear Theater*

signed, titled and dated 'New and Improved Thermonuclear Theater Kenny Scharf '09' (on the reverse)  
acrylic and spray paint on canvas  
106 x 78 in. (269.2 x 198.1 cm.)  
Painted in 2009.

\$100,000-150,000

237

**KENNY SCHARF (B. 1958)**

*Retchmess Chunkychunky*

signed, titled and dated 'Kenny Scharf 1985 Retchmess Chunkychunky' (on the reverse)  
oil, acrylic, spray paint, plastic toys, feathers and tinsel collage on canvas  
72 x 72 in. (182.8 cm x 182.8 cm.)  
Executed in 1985.

\$200,000-300,000



PROPERTY FROM AN IMPORTANT PRIVATE COLLECTION

235

**ROBERT INDIANA (1928-2018)**

*LOVE*

stamped with the artist's signature, number, date and foundry mark '© 1966-2001 R Indiana 4/8' (on the inside edge of the "E")  
polychromed aluminum  
18 x 18 x 9½ in. (45.7 x 45.7 x 24.1 cm.)  
Conceived in 1966 and executed in 2001. This work is number four from an edition of eight plus four artist's proofs.

\$200,000-300,000

PROPERTY FROM AN IMPORTANT PRIVATE COLLECTION

238

**ANDY WARHOL (1928-1987)**

*Campbell's Chicken Noodle Soup Box*

signed and dated 'Andy Warhol 86'; stamped with the Estate of Andy Warhol, the Andy Warhol Foundation for the Visual Arts Inc. and the Andy Warhol Art Authentication Board, Inc. stamps and numbered 'VF PA 90.070' and 'A143.0310' (on the overlap)  
acrylic and silkscreen ink on canvas  
14 x 14 in. (35.6 x 35.6 cm.)  
Painted in 1986.

\$100,000-150,000





PROPERTY FROM AN IMPORTANT PRIVATE COLLECTION

239

**ANDY WARHOL (1928-1987)**

*Marilyn Monroe (Marilyn): one print*

signed 'Andy Warhol' (on the reverse); stamped with the Andy Warhol Art Authentication Board, Inc. stamp and numbered 'A123.066' (on the reverse)  
 silkscreen in colors on paper  
 36 x 36 in. (91.4 x 91.4 cm.)  
 Executed in 1967. This work is a proof aside of the edition of 250.

\$150,000-200,000



242

**PHILIP GUSTON (1913-1980)**

*Untitled (Chair)*

signed and dated 'Philip Guston '68' (lower right)  
 charcoal on paper  
 17¾ x 23¾ in. (45.1 x 6.7 cm.)  
 Drawn in 1968.

\$60,000-80,000



PROPERTY FROM A PROMINENT COLLECTION

240

**ANDY WARHOL (1928-1987)**

*Car Crash*

stamped and dated 'Andy Warhol Enterprises, Inc., 1978' (lower right); stamped again with the Estate of Andy Warhol and the Andy Warhol Foundation for the Visual Arts, Inc. stamps and numbered 'WP890.23' and 'A171.042' (on the reverse)  
 silkscreen ink on paper  
 image: 20% x 36% in. (53 x 92.4 cm.)  
 sheet: 35 x 45 in. (88.9 x 114.3 cm.)  
 Executed circa 1978. This work is one of a small number of impressions.

\$250,000-350,000

PROPERTY FROM AN IMPORTANT PRIVATE COLLECTION

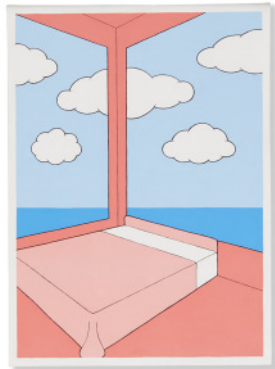
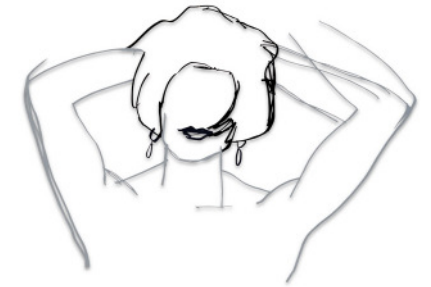
243

**TOM WESSELMANN (1931-2004)**

*Monica Head and Shoulders*

signed twice and dated twice 'Wesselmann 90 Wesselmann 90' (on the reverse)  
 enamel on laser-cut steel  
 29 x 40 in. (73.7 x 101.6 cm.)  
 Executed in 1990. This work is unique.

\$60,000-80,000



PROPERTY FROM AN IMPORTANT PRIVATE COLLECTION

241

**JOHN WESLEY (1928-2022)**

*The Old Skipper's Room*

signed, titled and dated "'THE OLD SKIPPER'S ROOM' John Wesley 1980' (on the reverse)  
 acrylic on canvas  
 43½ x 32 in. (110.5 x 81.3 cm.)  
 Painted in 1980.

\$80,000-120,000

PROPERTY FROM AN IMPORTANT PRIVATE COLLECTION

244

**JIM DINE (B. 1935)**

*Heart in the Sand*

signed, inscribed, titled and dated 'Heart in the Sand Jim Dine July 2006 Walla Walla' (on the reverse)  
 oil, acrylic and sand on canvas  
 10% x 8¾ in. (27 x 22.2 cm.)  
 Executed in 2006.

\$20,000-30,000





PROPERTY FROM AN IMPORTANT PRIVATE COLLECTION

245

**ROBERT INDIANA (1928-2018)**

*Ping (Yellow/Red/Black)*

signed with the artist's initials and dated 'RI 03' (on the reverse)  
oil on canvas  
12% x 12% in. (32.1 x 32.1 cm.)  
Painted in 2003.

\$40,000-60,000

PROPERTY FROM AN IMPORTANT PRIVATE COLLECTION

248

**RICHARD PETTIBONE (B. 1938)**

*Andy Warhol, 'Flowers'*

signed with the artist's initials and titled 'R.P. Andy Warhol'  
(on the stretcher)  
acrylic and silkscreen ink on canvas, in artist's frame  
6¼ x 6¼ in. (15.9 x 15.9 cm.)  
Executed circa 1970.

\$25,000-35,000



PROPERTY FROM AN IMPORTANT PRIVATE COLLECTION

246

**TOM SACHS (B. 1966)**

*Golden Arches (McDonald's Painting)*

signed and dated 'Tom Sachs 2002' (on the stretcher)  
acrylic on canvas  
48 x 48 in. (121.9 x 121.9 cm.)  
Painted in 2002.

\$60,000-80,000

PROPERTY FROM AN IMPORTANT PRIVATE COLLECTION

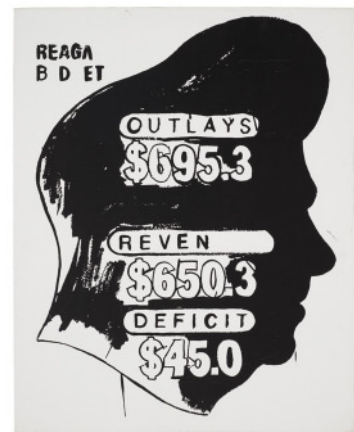
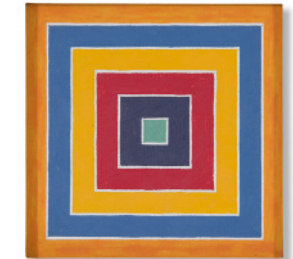
249

**RICHARD PETTIBONE (B. 1938)**

*Frank Stella, 'Concentric Square'*

signed and dated 'R Pettibone 72' (on the stretcher)  
acrylic and silkscreen ink on canvas  
3 x 3 in. (7.6 x 7.6 cm.)  
Painted in 1972.

\$25,000-35,000



247

**ANDY WARHOL (1928-1987)**

*Reagan Budget (Positive)*

stamped with the Andy Warhol Foundation for the Visual Arts, Inc., the  
Estate of Andy Warhol and the Andy Warhol Art Authentication Board  
Inc. stamps and numbered 'PA.10.400' and A111.103' (on the overlap)  
acrylic and silkscreen ink on canvas  
20 x 16 in. (50.8 x 40.6 cm.)  
Painted circa 1985-1986.

\$50,000-70,000

PROPERTY FROM AN IMPORTANT PRIVATE COLLECTION

250

**RICHARD PETTIBONE (B. 1938)**

*Andy Warhol, 'Mao'*

signed and dated 'R Pettibone 1975' (on the overlap)  
acrylic and silkscreen ink on canvas  
4 x 4 in. (10.2 x 10.2 cm.)  
Painted in 1975.

\$25,000-35,000





PROPERTY FROM AN IMPORTANT PRIVATE COLLECTION

251

**RICHARD PETTIBONE (B. 1938)**

*Andy Warhol, 'Saturday Disaster,' 1964*

signed, titled and dated 'Warhol Saturday Disaster 1964 R Pettibone 1970' (on the stretcher)  
acrylic and silkscreen ink on canvas, in artist's frame  
4¼ x 5½ in. (10.8 x 13 cm.)  
Painted in 1964.

\$20,000-30,000



PROPERTY FROM A NEW YORK CHARITABLE FAMILY TRUST

°252

**RICHARD PETTIBONE (B. 1939)**

*Marcel Duchamp, 'Bicycle Wheel,' 1913-14*

painted wood stool, bicycle wheel rim and forks  
53 x 27 x 13.50 in. (134.62 x 68.6 x 34.29 cm.)  
Executed in 1994.

\$40,000-60,000



PROPERTY FROM AN IMPORTANT PRIVATE COLLECTION

253

**DENNIS HOPPER (1936-2010)**

*Double Standard*

gelatin silver print  
30 x 44 in. (76.2 x 111.8 cm.)  
Photographed in 1961.

\$30,000-50,000

THE COLLECTION OF  
THOMAS AND DORIS AMMANN

DAY SALE | SESSION II

Friday 13 May 2022 | 1.30PM (Lots 301-366)

Scan to view  
full auction online





301

**MIKE BIDLO (B. 1953)**

*Not Warhol (Fox Trot, 1962)*

signed twice, titled and dated 'Mike Bidlo 84 Bidlo Not Andy Warhol's Fox Trot' (on the reverse)  
 acrylic on canvas  
 71¾ x 54 in. (182.2 x 137.2 cm.)  
 Painted in 1984.

\$40,000-60,000

302

**MARCEL DUCHAMP (1887-1968)**

*Coeurs Volants (Fluttering Hearts) and  
 Announcement for the Exhibition 'Doors'*  
 [Two Works]

(i)  
*Coeurs Volants (Fluttering Hearts)*  
 signed, dated and numbered '11/24 Marcel Duchamp 1968' in pencil  
 screenprint in colors, on wove paper  
 23¾ x 17¾ in. (60.1 x 44.9 cm.)  
 Executed in 1968. This work is number eleven from an edition of twenty-four, published by Something Else Press, New York.

(ii)  
*Announcement for the Exhibition 'Doors'*  
 signed and numbered 'Marcel Duchamp 21/50' in ink  
 cutout in acetate  
 image: 8¾ x 5½ in. (21 x 13 cm.)  
 sheet: 10¾ x 7¾ in. (28 x 19.5 cm.)  
 Executed in 1968. This work is number twenty-one from an edition of fifty.

\$5,000-7,000

303

**ANDY WARHOL (1928-1987)**

*Flowers*

signed, signed again with the artist's initials, inscribed and dated 'to VICTORIA AW 73 Andy Warhol 1965' (on the overlap)  
 acrylic, silkscreen ink and graphite on linen  
 8 x 8 in. (20.3 x 20.3 cm.)  
 Executed in 1965.

\$250,000-350,000

304

**ANDY WARHOL (1928-1987)**

*Electric Chairs*

signed, dated and stamp-numbered 'Andy Warhol 71 040/250' (on the reverse of each sheet)  
 screenprint in colors on paper, in ten parts  
 each sheet: 35¼ x 47¾ in. (89.5 x 121.2 cm.)  
 Executed in 1971. This set is number 40 from an edition of 250.

\$200,000-300,000



305

**STURTEVANT (1926-2014)**

*Warhol Gold Marilyn*

signed, titled and dated "'Warhol Gold Marilyn" Sturtevant '73' (on the reverse)  
 acrylic and silkscreen ink on canvas  
 diameter: 17¾ in. (45.1 cm.)  
 Painted in 1973.

\$150,000-250,000



306

**ROSALYN DREXLER (B. 1926)**

*Zoo Bandit Killed*

signed 'R. Drexler' (lower right); signed again, titled and dated 'Rosalyn Drexler ZOO BANDIT KILLED 1963' (on the reverse)  
 acrylic and paper collage on canvasboard  
 10 x 14 in. (25.4 x 35.5 cm.)  
 Executed in 1963.

\$20,000-30,000







307

**JANET COOLING (1951-2022)**

*Loves Room*

signed, titled and dated 'Loves Room Janet Cooling 1978' (lower edge)  
 pastel, colored pencil, acrylic and graphite on paper  
 20½ x 30 in. (52.1 x 76.2 cm.)  
 Executed in 1978.

\$3,000-5,000



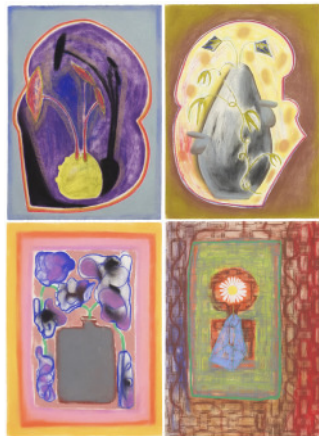
308

**TOM WESSELMANN (1931-2004)**

*Study for Great American Nude #95*

signed and dated 'Wesselmann 76' (lower center); dated again '76'  
 (lower right); titled and dated again 'STUDY FOR GREAT AMERICAN  
 NUDE #95 1976' (on the reverse)  
 colored pencil and graphite on vellum  
 8½ x 11 in. (21.5 x 28 cm.)  
 Drawn in 1976.

\$25,000-35,000



309

**FRANCESCO CLEMENTE (B. 1952)**

*Chinese Window; Season; True Flower;  
 The Colour of Wisdom [Four Works]*

signed, titled respectively and dated 'francesco clemente 1988'  
 (on the reverse of each sheet)  
 pastel on paper  
 each: 26¼ x 19 in. (66.7 x 48.3 cm.)  
 Drawn in 1988.

\$15,000-20,000

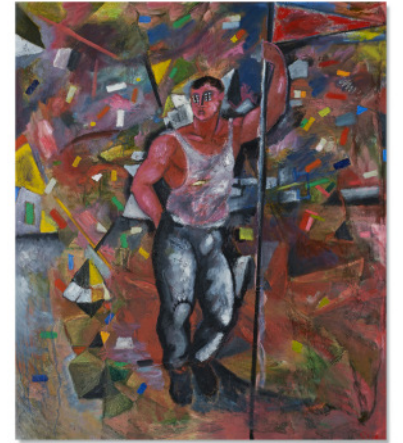
310

**SANDRO CHIA (B. 1946)**

*Courageous Boy with Flag*

signed 'Chia' (lower right)  
 oil and fabric on canvas  
 92½ x 78 in. (234 x 198.1 cm.)  
 Executed in 1982.

\$50,000-70,000



311

**FRANCESCO CLEMENTE (B. 1952)**

*Self-Portrait*

signed and dated '1980 Francesco Clemente' (on the reverse)  
 oil on canvas  
 15¾ x 17¾ in. (40 x 45.1 cm.)  
 Painted in 1980.

\$40,000-60,000



312

**SANDRO CHIA (B. 1946)**

*Il Comico*

oil on burlap  
 63¼ x 31½ in. (160.7 x 80 cm.)  
 Painted in 1978.

\$10,000-15,000





313

**MICHAEL MOGAVERO (B. 1950)**

*Face It*

signed, titled and dated "'Face It" M. Mogavero 1980' (on the overlap)  
acrylic on canvas  
72 x 60 in. (183 x 152.5 cm.)  
Painted in 1980.

\$3,000-5,000



314

**FRANCESCO CLEMENTE (B. 1952)**

*Self-Portrait*

signed and dated '1980 Francesco Clemente' (on the reverse)  
oil on canvas  
11¼ x 7¾ in. (29.8 x 20 cm.)  
Painted in 1980.

\$10,000-15,000



315

**PHILIP TAAFFE (B. 1955)**

*Untitled Composition*

signed and dated 'P. Taaffe 1984-85' (on the reverse)  
oil, acrylic and linoprint collage on canvas  
87¾ x 68½ in. (223 x 173.4 cm.)  
Executed in 1984-1985.

\$30,000-50,000



316

**FRANCESCO CLEMENTE (B. 1952)**

*Self-Portrait*

oil and gold bronze on canvas  
21¾ x 17¼ in. (54.9 x 45.1 cm.)  
Painted in 1980.

\$20,000-30,000



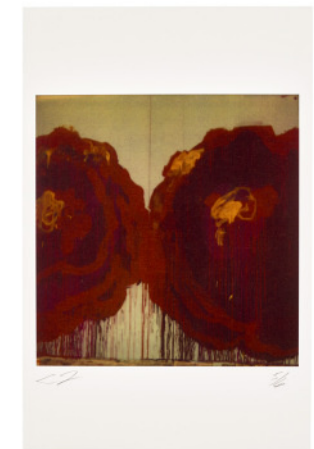
317

**MILO REICE (B. 1952)**

*Big Bang (Pandora)*

signed, titled, inscribed and dated "'BIG BANG" (PANDORA)  
Mythological 1. Milo Reice 1985' (on the stretcher)  
oil on canvas  
83¾ x 84½ in. (212.4 x 214.6 cm.)  
Painted in 1985.

\$2,000-3,000



318

**CY TWOMBLY (1928-2011)**

*Painting Detail (Roses)*

signed with the artist's initials and numbered 'CT 5/6' (lower edge)  
color dry-print on paper  
image: 10¼ x 9¾ in. (26 x 25.1 cm.)  
sheet: 16¾ x 10¾ in. (42.9 x 27.6 cm.)  
Executed in 2009. This work is number five from an edition of six.

\$10,000-15,000



319

**CY TWOMBLY (1928-2011)**

*Painting Detail (Roses)*

signed with the artist's initials and numbered 'CT 5/6' (lower edge)  
 color dry-print on paper  
 image: 10¼ x 9⅞ in. (26 x 25.1 cm.)  
 sheet: 16⅞ x 10⅞ in. (42.9 x 27.6 cm.)  
 Executed in 2009. This work is number five from an edition of six.

\$10,000-15,000



320

**CY TWOMBLY (1928-2011)**

*Painting Detail (Roses)*

signed with the artist's initials and numbered 'CT 5/6' (lower edge)  
 color dry-print on paper  
 image: 10¼ x 9⅞ in. (26 x 25.1 cm.)  
 sheet: 16⅞ x 10⅞ in. (42.9 x 27.6 cm.)  
 Executed in 2009. This work is number five from an edition of six.

\$10,000-15,000



321

**BRICE MARDEN (B. 1938)**

*First Square*

signed, titled, inscribed and dated '2011 #1 First Square  
 Brice Marden' (on the reverse)  
 oil and graphite on marble  
 15¾ x 9⅞ in. (40 x 25.1 cm.)  
 Executed in 2011.

\$300,000-500,000

322

**CARL ANDRE (B. 1935)**

*Structure White Consciousness*

signed, signed again with the artist's monogram and dated  
 'ca carl andre 1965' (on a paper label affixed to the reverse)  
 printed paper collage on board mounted on Masonite  
 5 x 22 in. (12.7 x 55.8 cm.)  
 Executed in 1965.

\$40,000-60,000



323

**BRICE MARDEN (B. 1938)**

*Souvenir de Grece 13*

signed, titled and dated 'S. d G 13 B. Marden 74/96' (lower center)  
 graphite, beeswax and collage on paper  
 29½ x 22¼ in. (74.9 x 56.5 cm.)  
 Executed in 1974-1996.

\$200,000-300,000



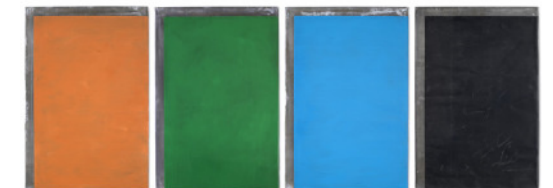
324

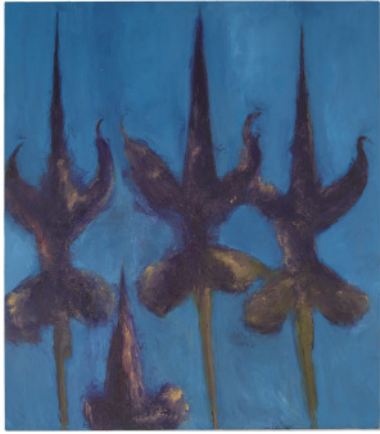
**GÜNTHER FÖRG (1952-2013)**

*Untitled*

signed, inscribed and dated '55/87 Förg 87'  
 (on the reverse of each panel)  
 acrylic on lead on wood, in four parts  
 each: 23¾ x 16 in. (60.3 x 40.6 cm.)  
 Executed in 1987.

\$150,000-200,000





325

**ALESSANDRO TWOMBLY (B. 1959)**

*Iris Aurantica*

signed and dated 'Alessandro Twombly 1989' (on the reverse)  
oil on canvas  
62 7/8 x 55 in. (160 x 140 cm.)  
Painted in 1989.

\$2,000-3,000



326

**MARTIN KIPPENBERGER (1953-1997)**

*Untitled (The Sovereign); Untitled (The Sovereign);  
Untitled (Hotel Mencey); Untitled (The Sovereign);  
Untitled (The Sovereign); Untitled (Hotel Mencey);  
Untitled (Hotel Chelsea); Untitled (Hotel Chelsea)*  
[Eight Works]

signed with the artist's initials and dated (lower edge of each sheet)  
colored pencil, graphite, felt-tip pen, white-out, oil crayon and Letraset  
on hotel stationery  
dimensions variable  
largest: 11 5/8 x 8 1/4 in. (29.5 x 21 cm.)  
smallest: 11 x 8 1/2 in. (27.9 x 21.6 cm.)  
Executed in 1989-1990.

\$90,000-120,000



327

**FRANZ WEST (1947-2012)**

*Passstück (Aligner)*

plaster, plastic, papier-mâché and lacquer  
8 1/2 x 31 1/4 x 10 1/2 in. (21.5 x 79.3 x 26.6 cm.)  
Executed in 1983.

\$20,000-30,000

328

**MARTIN KIPPENBERGER (1953-1997)**

*Casa Magnetica*

oil and graphite on canvas  
39 3/8 x 47 1/4 in. (100 x 120 cm.)  
Executed in 1983.

\$250,000-350,000



329

**MARTIN KIPPENBERGER (1953-1997)**

*New York von der Bronx aus gesehen [New York  
Seen from the Bronx]*

incised with the artist's initial, number and date 'K 851/3'  
(on the underside of bronze element)  
bronze on artist's wood base  
overall: 63 3/8 x 9 3/4 x 9 3/4 in. (161.6 x 24.8 x 24.8 cm.)  
bronze: 5 1/8 x 5 1/8 x 5 1/8 in. (14.3 x 13 x 13 cm.)  
Executed in 1985. This work is number one from an edition of three.

\$60,000-80,000



330

**RAINER FETTING (B. 1949)**

*Rotes Mauerbild [Red Wall Picture]*

dispersion on canvas  
78 3/4 x 67 in. (200 x 170 cm.)  
Executed in 1979.

\$40,000-60,000





331  
**MARTIN KIPPENBERGER (1953-1997) &  
 ALBERT OEHLLEN (B. 1954)**

*Untitled (Den Müttern nur die Hälfte) and  
 Untitled (Desastres de la Democracia)*  
 [Two Works]

(i)  
*Untitled (Den Müttern nur die Hälfte)*  
 signed, titled and dated 'Den Müttern nur die Hälfte!  
 Kippenberger 83 Oehlen' (lower center)  
 acrylic, ink, printed paper and paper collage on paper  
 11¾ x 9 in. (29.8 x 22.9 cm.)  
 Executed in 1983.

(ii)  
*Untitled (Desastres de la Democracia)*  
 signed and dated twice 'K 84 A. Oehlen 84' (lower right)  
 acrylic, ink, tape, printed paper and paper collage on paper  
 11½ x 8½ in. (28.3 x 20.6 cm.)  
 Executed in 1984.

\$10,000-15,000

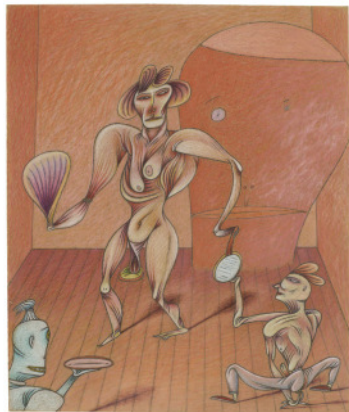


332  
**LLYN FOULKES (B. 1934)**

*You've Got to Show Me How to Do It*

signed and dated 'Llyn Foulkes 1979' (on the reverse)  
 oil, paper collage, photograph and staples on woodblock,  
 in artist's frame  
 7¼ x 6¼ (18.3 x 15.8 cm.)  
 Executed in 1979.

\$5,000-7,000



333  
**JIM NUTT (B. 1938)**

*Quick Twittle Twittle*

signed, titled and dated 'By Jim Nutt © '78 "Quick (twittle, twittle) [sic]"  
 (on the reverse)  
 colored pencil on paper  
 10¾ x 9½ in. (27.3 x 23.2 cm.)  
 Drawn in 1978.

\$20,000-30,000

334

**WALLACE BERMAN (1926-1976)**

*Untitled (Dark Figure); Untitled (Businessman at  
 Desk); Untitled (National Debt); Untitled (Visual Aid  
 Instruction)* [Four Works]

(i)  
*Untitled (Dark Figure)*  
 verifax collage on paperboard  
 (positive image), in artist's frame  
 6 ½ x 3 ¾ in. (15.6 x 9.5 cm.)  
 Executed circa 1964-1976.

(ii)  
*Untitled (Businessman at Desk)*  
 verifax collage on paperboard, in  
 artist's frame  
 7 x 5 ½ in. (17.8 x 14.2 cm.)  
 Executed circa 1964-1976.

\$12,000-18,000

(iii)  
*Untitled (National Debt)*  
 signed and dated 'Berman 1964'  
 (on the reverse)  
 verifax collage, bookpage and  
 Letraset, in artist's frame  
 13 ¾ x 12 ¾ in. (35 x 32.4 cm.)  
 Executed in 1964.

(iv)  
*Untitled (Visual Aid Instruction)*  
 verifax collage on paperboard, in  
 artist's frame  
 3 ¾ x 7 ½ in. (9.8 x 18.7 cm.)  
 Executed circa 1964-1976.



335

**TIM ROLLINS AND K.O.S. (1955-2017)**

*The Journal of the Plague Year*

signed, titled, inscribed and dated 'The Journal of the Plague Year  
 TR + K.O.S. South Bronx 1988' (on the reverse)  
 blood and graphite on book pages mounted on linen  
 66 x 54 in. (167.6 x 137.2 cm.)  
 Executed in 1988.

\$20,000-30,000



336

**ANDREW MASULLO (B. 1957)**

*1765.; 1797.; 1856.; 1941.* [Four Works]

(i)  
 1765.  
 signed, titled and dated '1765.  
 Masullo. 88.' (on the stretcher)  
 oil on found painting, in artist's  
 frame  
 14 ¾ x 11 ½ in. (36.5 x 28.3 cm.)  
 Executed in 1988.

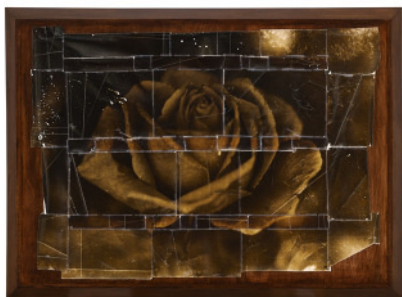
(ii)  
 1797.  
 paper collage on photograph  
 9 ½ x 6 ¾ in. (23.2 x 17.1 cm.)  
 Executed in 1988.

\$10,000-15,000

(iii)  
 1856.  
 ermine fur on photograph  
 6 ¾ x 8 ¾ in. (16.2 x 21.3 cm.)  
 Executed in 1988.

(iv)  
 1941.  
 watercolor on cut printed paper  
 6 ¾ x 5 ½ in. (17.6 x 14.4 cm.)  
 Executed in 1989.





337

**MIKE AND DOUG STARN (B. 1961)**

*Rose*

toned silver print collage, scotch tape and nails mounted on artists' wood frame  
 65½ x 88¾ in. (165.4 x 225.1 cm.)  
 Executed in 1982-88.

\$10,000-15,000

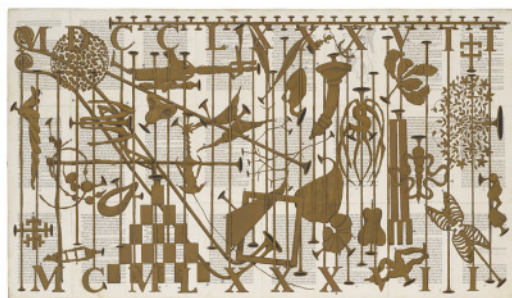
340

**BRYAN HUNT (B. 1947)**

*Teng*

spruce and balsa wood, silk paper, copper leaf, black lacquer, steel rod  
 65 x 9 x 7 in. (165.1 x 22.9 x 17.8 cm.)  
 Executed in 1979.

\$10,000-15,000



338

**TIM ROLLINS AND K.O.S. (1955-2017)**

*Study for Amerika VII (After Franz Kafka)*

signed, titled, inscribed and dated 'Study for Amerika VII TR + K.O.S. South Bronx 1987' (on the reverse)  
 gold and silver watercolor on bookpages mounted on linen  
 24 x 42 in. (61 x 106.7 cm.)  
 Executed in 1987.

\$15,000-20,000

341

**MARK INNERST (B. 1957)**

*Distant View*

signed and dated 'MARK INNERST 1988' (on the reverse)  
 oil and acrylic on panel, in artist's frame  
 22¾ x 15 in. (57.8 x 38.1 cm.)  
 Painted in 1988.

\$3,000-5,000



339

**TOM OF FINLAND (1920-1991)**

*Untitled [Twelve Works]*

signed and dated 'Tom-78' (lower edge of sheets i-viii, xi);  
 signed 'Tom' (lower right of sheets ix-x)  
 graphite on paper  
 dimensions variable  
 largest: 15 x 20½ in. (38.1 x 51.1 cm.)  
 smallest: 11¾ x 8¼ in. (29.8 x 21 cm.)  
 Drawn in 1967 (sheets ix-x) and 1978 (sheets i-viii, xi-xii).

\$80,000-120,000

342

**GEORGE CONDO (B. 1957)**

*Human Landscape and Thought Trap [Two Works]*

signed and dated 'Condo 83-12' (lower left of each sheet);  
 signed again, titled respectively and dated again 'Condo 83-12'  
 (on the reverse of each sheet)  
 oil on paper  
 each: 22 x 16½ in. (55.9 x 41.9 cm.)  
 Painted in 1983.

\$20,000-30,000





343

**ROSS BLECKNER (B. 1949)**

*Poverty Bouquet*

signed, titled and dated 'POVERTY BOUQUET Ross Bleckner 1986'  
(on the reverse)  
oil on linen  
48 x 40 in. (121.6 x 101.6 cm.)  
Painted in 1986.

\$12,000-18,000

346

**ERIC FISCHL (B. 1948)**

*Untitled (Study for Saigon Minnesota)*

signed and dated 'Fischl '86' (lower left)  
oil on paper  
16 x 12 in. (40.6 x 30.5 cm.)  
Painted in 1986.

\$20,000-30,000



344

**BARRY FLANAGAN (1941-2009)**

*Opera Dog*

incised with the artist's monogram and number 'bf 4/7'  
(on the front proper left foot)  
bronze  
31¼ x 11 x 34¾ in. (78.3 x 28 x 87 cm.)  
Conceived in 1981 and cast in 1991. This work is number four  
from an edition of seven plus one artist's proof.

\$30,000-50,000

347

**ROBERT THERRIEN (1947-2019)**

*No title (black hat)*

stamped with the artist's initials and date 'RT 85'  
(on the underside of the base)  
bronze, enamel, wood  
49¼ x 12½ x 5½ in. (125.1 x 31.8 x 14 cm.)  
Executed in 1985. This work is unique.

\$20,000-30,000



345

**DONALD BAECHLER (1956-2022)**

*Animal Farm 2*

signed with the artist's initials and dated 'DB91' (lower left);  
inscribed '2' (lower right)  
gesso, gouache and coffee on paper  
52¾ x 40¼ in. (134.3 x 102.2 cm.)  
Executed in 1991.

\$10,000-15,000

348

**ALEX KATZ (B. 1927)**

*Night 2*

signed 'Alex Katz' (on the overlap)  
oil on linen  
138 x 48¼ in. (350.5 x 122.6 cm.)  
Painted in 1987.

\$200,000-300,000





349

**MARK TANSEY (B. 1949)**

*Iconoclast (Study for Triumph Over Mastery II)*

signed, titled and dated 'Tansey 1987 "Iconoclast" (Study Towards Triumph Over Mastery)' (on the reverse)  
 oil on canvas  
 14 x 11 1/4 in. (35.5 x 28.5 cm.)  
 Painted in 1987.

\$150,000-200,000



350

**JENNIFER BARTLETT (B. 1941)**

*Tidal Wave II*

titled 'TIDAL WAVE II' (on the reverse of each stretcher)  
 oil and graphite on canvas, in two parts, with enamel silkscreen on baked enamel steel plate, in forty-four parts  
 overall: 103 x 144 in. (261.6 x 365.8 cm.)  
 each canvas: 48 1/4 x 48 1/4 in. (122.6 x 122.6 cm.)  
 each plate: 12 x 12 in. (30.5 x 30.5 cm.)  
 Executed in 1978.

\$15,000-20,000



351

**THOMAS NOZKOWSKI (1944-2019)**

*Untitled (6-58)*

signed twice, titled, inscribed and dated 'Thomas Nozkowski THOMAS NOZKOWSKI 70 HESTER ST NYC NY 10002 UNTITLED 6-58 1988' (on the reverse and the backing board)  
 oil on canvasboard  
 16 x 20 in. (40.6 x 50.8 cm.)  
 Painted in 1988.

\$5,000-7,000

352

**ROBERT WILSON (B. 1941)**

*'Hamletmachine' Table and Four Chairs*

perforated and sheet steel  
 installation dimensions variable  
 table: 29 x 144 x 12 in. (73.5 x 366 x 30.5 cm.)  
 each chair: 38 x 9 1/4 x 18 1/2 in. (96.5 x 23.5 x 47 cm.)  
 Executed in 1986.

\$20,000-30,000



353

**SALOMÉ (B. 1954)**

*Brief Brecht*

acrylic on canvas  
 67 x 51 1/4 in. (170 x 130 cm.)  
 Painted in 1979.

\$10,000-15,000



354

**CHRISTOPHER BROWN (B. 1951)**

*Night of Ice*

inscribed '88' (lower right); signed, titled and dated 'NIGHT OF ICE Christopher Brown 1992' (on the reverse)  
 oil on linen  
 88 x 88 in. (223.5 x 223.5 cm.)  
 Painted in 1992.

\$2,000-3,000







355

**JONATHAN BOROFSKY (B. 1942)**

*Silhouette Cut-Out With Holes Drilled At...  
2,659,320*

titled '2659320' (lower right of figure)  
shaped Masonite, in two parts  
overall: 70 x 44 in. (177.8 x 111.8 cm.)  
figure: 70 x 24 in. (177.8 x 61 cm.)  
briefcase: 17 x 18 in. (43.2 x 45.7 cm.)  
Executed in 1979.

\$10,000-15,000



356

**GEORG HEROLD (B. 1947)**

*F-2*

signed and dated 'Herold 88' (on the reverse)  
copper electroplated on canvas  
16½ x 11½ in. (41 x 30.2 cm.)  
Executed in 1988.

\$2,000-3,000



357

**LOIS LANE (B. 1948)**

*Untitled*

signed and dated 'Lane 82' (on the stretcher)  
oil on canvas  
96 x 72 in. (243.8 x 182.9 cm.)  
Painted in 1982.

\$3,000-5,000

358

**JIŘÍ GEORG DOKOUPIL (B. 1954)**

*Sun Flower Field with Two Sticking Out Sun Flowers*

candle soot on canvas  
45½ x 57½ in. (115.9 x 145.7 cm.)  
Executed in 1989.

\$6,000-8,000



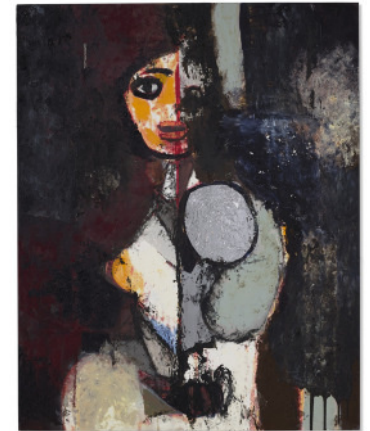
359

**ENOC PEREZ (B. 1967)**

*Untitled (Bather)*

signed, titled and dated 'July 2013 Enoc Perez Untitled (Bather)'  
(on the reverse)  
oil, acrylic, silver leaf and inkjet on canvas  
60 x 47½ in. (152.4 x 121.6 cm.)  
Executed in 2013.

\$8,000-12,000



360

**WERNER BÜTTNER (B. 1954)**

*Artefakt in Pudelform*

signed and dated 'Büttner 04' (lower right)  
oil on canvas  
74½ x 74½ in. (189.2 x 189.2 cm.)  
Painted in 2004.

\$20,000-30,000





361

**URS FISCHER (B. 1973)**

*Romance / Appetite*

signed 'Urs Fischer' (on a paper label affixed to the reverse of the right element)  
 paper laminated MDF, primer, gesso, screen printing ink, milled polyurethane frame and resin-based paint, in two parts  
 each: 38½ x 29½ x 1½ in. (97.8 x 74.8 x 2.8 cm.)  
 Executed in 2018. This work is number one from an edition of two plus two artist's proofs.

\$80,000-120,000

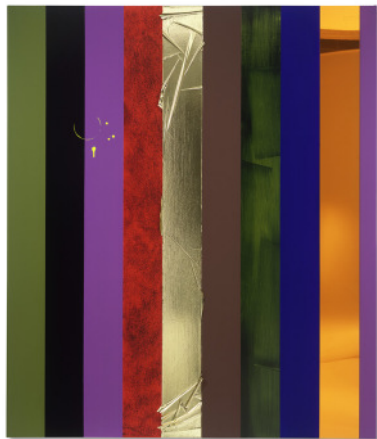
364

**GAVIN TURK (B. 1967)**

*Transit V Cobra Disaster Green*

signed, titled and dated "Transit V Cobra Disaster Green  
 Gavin Turk 2011" (on the reverse)  
 acrylic and silkscreen ink on canvas  
 70¼ x 57½ in. (178.3 x 145.1 cm.)  
 Painted in 2011.

\$25,000-35,000



362

**ANSELM REYLE (B. 1970)**

*Untitled*

orange Plexiglas, gold foil and acrylic on canvas  
 88¼ x 74½ in. (224.2 x 189.2 cm.)  
 Executed in 2005.

\$20,000-30,000

365

**SEAN LANDERS (B. 1962)**

*Truman Capote*

signed, titled and dated "TRUMAN CAPOTE"  
 © 1999 SEAN LANDERS' (lower right)  
 oil on linen  
 47 x 39 in. (119.4 x 99 cm.)  
 Painted in 1999.

\$20,000-30,000



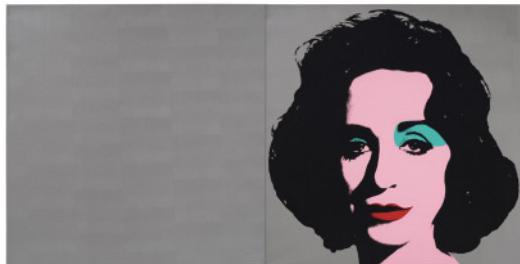
363

**DEBORAH KASS (B. 1952)**

*Silver Deb*

signed 'D. KASS' (on the reverse of the left canvas);  
 signed again, titled and dated 'SILVER DEB D. KASS 2000'  
 (on the reverse of the right canvas)  
 diptych—acrylic and silkscreen ink on canvas  
 40 x 80 in. (101.6 x 203 cm.)  
 Painted in 2000.

\$30,000-50,000



366

**KLAUDIA SCHIFFERLE (B. 1955)**

*Untitled*

signed, numbered consecutively and dated 'Schifferle 2011'  
 (on the reverse of each canvas)  
 acrylic varnish on canvas, in eighteen parts  
 overall: 59½ x 95½ in. (151.1 x 242.5 cm.)  
 each: 19½ x 15½ in. (49.5 x 39.4 cm.)  
 Painted in 2011.

\$10,000-15,000





**POST-WAR AND  
CONTEMPORARY ART  
DAY SALE SESSION III**

Friday 13 May 2022  
3.30 pm (Lots 401-531)

Scan to view  
full auction online





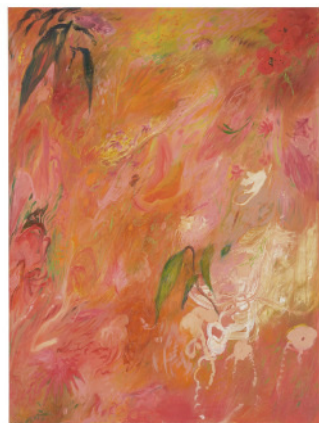
401

**LEELEE KIMMEL (B. 1983)**

*No. 8*

oilstick and acrylic on canvas  
72 x 120 in. (182.9 x 304.8 cm.)  
Executed in 2022.

\$60,000-80,000



402

**SOUMYA NETRABILE (B. 1966)**

*Song in Pink and Orange*

signed, titled and dated 'SONG IN PINK + ORANGE 2022  
SOUMYA NETRABILE' (on the reverse)  
oil on canvas  
40 x 30 in. (101.6 x 76.2 cm.)  
Painted in 2022.

\$10,000-15,000



403

**ALEX EAGLETON (B. 1979)**

*Candle as a portrait : ciao*

signed twice, inscribed and dated 'IN THE CARDS A EAGLETON  
Alex Eagleton 2022' (on the reverse)  
oil, alcohol ink and flocking on canvas  
78 x 45 in. (198.1 x 114.3 cm.)  
Executed in 2022.

\$18,000-25,000

404

**KARYN LYONS (B. 1981)**

*The Pajama Party*

signed twice, titled and dated, 'Karyn Lyons KARYN LYONS 2022  
THE PAJAMA PARTY' (on the reverse)  
oil on canvas  
20.5 x 17 in. (52.1 x 42.6 cm.)  
Painted in 2022.

\$15,000-20,000



405

**STEVIE DIX (B. 1990)**

*Grief*

oil on canvas, in artist's frame  
19¾ x 23½ in. (50.2 x 59.7 cm.)  
Painted in 2022.

\$8,000-12,000



406

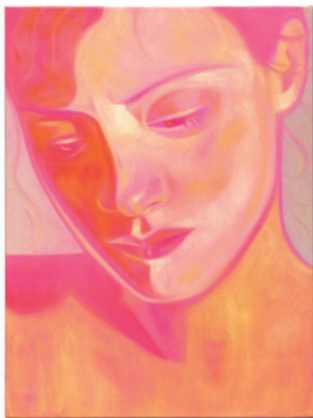
**DEBORAH BROWN (B. 1955)**

*Blue Door*

signed, titled and dated 'Deborah Brown 2022 "Blue Door"  
(on the overlap)  
oil on canvas  
60 x 48 in. (152.4 x 121.9 cm.)  
Painted in 2022.

\$15,000-20,000





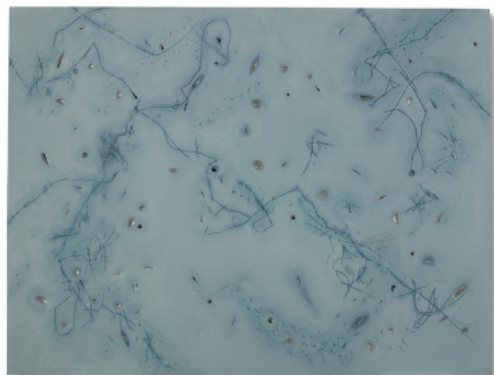
407

**INÈS LONGEVIAL (B. 1990)**

*Olive Oil on Dragon Fruit*

oil on canvas  
23.6 x 17.7 in. (59.9 x 45 cm.)  
Painted in 2022.

\$10,000-15,000



408

**ABBY LEIGH (B. 1948)**

*Everyone was Migrating Somewhere*

oil on Dibond that has been scraped, sanded, axed and  
sledgehammered  
50 x 66 in. (127 x 167.6 cm.)  
Executed in 2020.

\$15,000-20,000



409

**B. THOM STEVENSON (B. 1985)**

*Total Insanity*

signed, titled and dated 'B. THOM STEVENSON  
TOTAL INSANITY 2022' (on the overlap)  
acrylic and enamel on canvas  
40 x 50 in. (101.6 x 127 cm.)  
Painted in 2022.

\$8,000-12,000

410

**KYLE ORLANDO (B. 1989)**

*Street Heat Skipping Summers Feet*

signed twice, inscribed and dated, 'LOST IN THE FLOOD -22 ice ICE  
BABY KYLE ORLANDO KYLE ORLANDO' (on the reverse)  
acrylic and spray paint on canvas, in artist's frame  
31 x 41 in. (78.7 x 104.1 cm.)  
Painted in 2022.

\$4,000-6,000



411

**OLIVER CLEGG (B. 1980)**

*they said a lot of funny things to me*

oil on canvas  
64 x 48 in. (162.6 x 121.9 cm.)  
Painted in 2022.

\$18,000-25,000



412

**MIE OLISE KJÆRGAARD**

*On a hammerhead doing akroyoga with some birds*

acrylic on canvas  
59 x 51¼ in. (149.7 x 130.1 cm.)  
Painted in 2022.

\$8,000-12,000





413

**YVES SCHERER (B. 1987)**

*Meadow Lane*

signed and dated 'Yves Scherer 21' (on the reverse)  
oil on canvas  
77 x 87 in. (195.6 x 221 cm.)  
Painted in 2021.

\$20,000-30,000



414

**COCO YOUNG (B. 1989)**

*Jour de Mistral*

titled 'JOUR DE MISTRAL' (on the reverse)  
oil on canvas  
45 x 64 in. (114.3 x 162.7 cm.)  
Painted in 2022.

\$10,000-15,000



415

**DANIELLE ORCHARD (B. 1985)**

*Dock at Louisiana*

signed and dated 'Danielle Orchard 2019' (on the overlap)  
oil on canvas  
76 x 101½ in. (193 x 257.8 cm.)  
Painted in 2019.

\$40,000-60,000

PROPERTY FROM THE COLLECTION OF MYRON CALHOUN

416

**TUNJI ADENIYI-JONES (B. 1992)**

*Patterns & Rituals XIX*

signed with the artist's initials and dated 'TAJ 19' (on the reverse)  
marker and graphite on paper  
8¼ x 5 in. (21 x 12.7 cm.)  
Executed in 2019.

\$4,000-6,000



PROPERTY FROM A NEW YORK CHARITABLE FAMILY TRUST

417

**LISA YUSKAVAGE (B. 1962)**

*Still Life Wearing a Wig*

signed and dated 'Lisa Yuskavage 1999' (lower left); signed again,  
titled and dated again 'Lisa Yuskavage 1999 Still Life Wearing a Wig'  
(on the reverse)  
watercolor and graphite on paper  
36½ x 46 in. (92.7 x 114.3 cm.)  
Executed in 1999.

\$40,000-60,000



PROPERTY FROM THE COLLECTION OF MYRON CALHOUN

418

**WANGECHI MUTU (B. 1972)**

*Untitled (Pin-Up no.2)*

watercolor, graphite and printed paper collage on paper  
14 x 10½ in. (35.6 x 25.7 cm.)  
Executed in 2001.

\$8,000-12,000





HELPING CHILDREN HEAL: ARTWORK DONATED TO BENEFIT RXART

419

**AUSTIN LEE (B. 1983)**

*Icarus*

signed, inscribed, titled and dated 'For Rx Art A Lee 2022 "ICARUS"  
(on the reverse)  
acrylic on wood  
16 x 20 in. (40.6 x 50.8 cm.)  
Painted in 2022.

\$8,000-12,000



PROPERTY TO BENEFIT THE BRONX MUSEUM OF THE ARTS,  
ON THE OCCASION OF ITS 50TH ANNIVERSARY

420

**ANGEL OTERO (B. 1981)**

*Title to be Determined*

oil paint and fabric collaged on canvas  
72 x 96 in. (182.9 x 243.8 x 3.8 cm.)  
Executed in 2022.

\$80,000-120,000



421

**REBECCA NESS (B. 1992)**

*Lunch Break*

signed twice, titled and dated "'LUNCH BREAK"  
Rebecca Ness 2020 NESS' (on the reverse)  
oil on canvas  
8 x 9 in. (20.3 x 22.9 cm.)  
Painted in 2020.

\$4,000-6,000

422

**ANTHONY CUDAHY (B. 1989)**

*The Braiding*

oil on canvas  
72 x 60 in. (182.9 x 152.4 cm.)  
Painted in 2019.

\$25,000-35,000



ARTISTS FOR HUMANITY: A TRIBUTE TO UKRAINE  
BENEFITING DOCTORS WITHOUT BORDERS

423

**YOSHITOMO NARA (B. 1959)**

*Lone Star*

colored pencil on paper  
15 x 10½ in. (38.1 x 26.7 cm.)  
Executed in 2013.

\$100,000-150,000



ARTISTS FOR HUMANITY: A TRIBUTE TO UKRAINE  
BENEFITING DOCTORS WITHOUT BORDERS

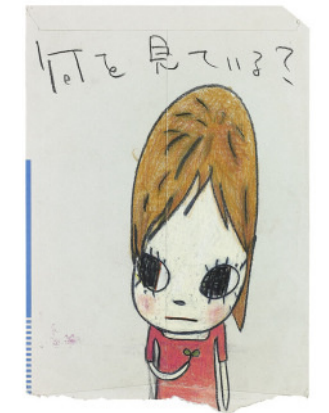
424

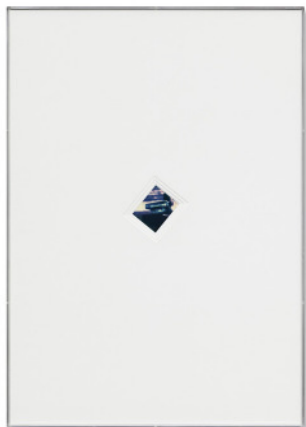
**YOSHITOMO NARA (B. 1959)**

*Sprout in Hand*

colored pencil on paper  
13½ x 9½ in. (34.3 x 24.1 cm.)  
Executed in 2013.

\$80,000-120,000





ARTISTS FOR HUMANITY: A TRIBUTE TO UKRAINE  
BENEFITING DOCTORS WITHOUT BORDERS

425

**CYPRIEN GAILLARD (B. 1980)**

*Green Vessel Study*

polarid, mat, aluminum and Plexiglas frame  
40.50 x 28.75 x 1.75 in. (102.87 x 73.03 x 4.45 cm.)

\$3,000-5,000

ARTISTS FOR HUMANITY: A TRIBUTE TO UKRAINE  
BENEFITING DOCTORS WITHOUT BORDERS

428

**JUERGEN TELLER (B. 1964)**

*If You Pay Attention No. 132, Iran*

giclee print  
16 x 20 in. (40.6 x 50.8 cm.)

Executed in 2019. This work is number one from an edition of five.

\$3,000-5,000



ARTISTS FOR HUMANITY: A TRIBUTE TO UKRAINE  
BENEFITING DOCTORS WITHOUT BORDERS

426

**ILYA KABAKOV (B. 1933)**

*The Half of the Painting #8*

oil on canvas  
11½ x 11½ x 1¼ in. (29.5 x 29.5 x 4.6 cm.)  
Painted in 2021.

\$20,000-30,000

ARTISTS FOR HUMANITY: A TRIBUTE TO UKRAINE  
BENEFITING DOCTORS WITHOUT BORDERS

429

**LESIA KHOMENKO (B. 1980)**

*From "Lesia Khomenko and Her School" series*

mixed media and acrylic on biflex  
82¼ x 57 in. (209 x 145 cm.)  
Executed in 2018.

\$5,000-10,000



ARTISTS FOR HUMANITY: A TRIBUTE TO UKRAINE  
BENEFITING DOCTORS WITHOUT BORDERS

427

**BORIS MIKHAILOV (B. 1938)**

*Untitled (from the "Yesterday's Sandwich" series)*

chromogenic print from diafilm  
11¼ x 15¼ in. (30 x 40 cm.)  
Executed in 1971; printed circa 1990.

\$3,000-5,000

ARTISTS FOR HUMANITY: A TRIBUTE TO UKRAINE  
BENEFITING DOCTORS WITHOUT BORDERS

430

**NADIA KAABI-LINKE (B. 1978)**

*At Swim Two Hairs*

watercolor on paper  
32½ x 23 in. (82.6 x 58.4 cm.)  
Painted in 2016.

\$3,000-5,000







ARTISTS FOR HUMANITY: A TRIBUTE TO UKRAINE  
BENEFITING DOCTORS WITHOUT BORDERS

431

**OLAFUR ELIASSON (B. 1967)**

*Self-reflective Compass*

brass, paint, color-effect filter glass, magnets, motor and ballast  
14½ x 8¾ x 14½ in. (36.8 x 22.1 x 36.8 cm.)  
Executed in 2018.

\$15,000-20,000



ARTISTS FOR HUMANITY: A TRIBUTE TO UKRAINE  
BENEFITING DOCTORS WITHOUT BORDERS

432

**JOSE DÁVILA (B. 1974)**

*Untitled (Cold Shoulder) IV*

archival pigment print  
88½ x 61 x 3 in. (225 x 154.9 x 7.9 cm.)  
Executed in 2019. This work is from an edition of four plus one  
artist's proof.

\$20,000-30,000



ARTISTS FOR HUMANITY: A TRIBUTE TO UKRAINE  
BENEFITING DOCTORS WITHOUT BORDERS

433

**TOMOO GOKITA (B. 1969)**

*Yellow Magic Carnival*

acrylic on canvas  
76.4 x 51.3 in. (194.1 x 130.3 cm.)  
Painted in 2021.

\$50,000-70,000

434

**ADRIANA VAREJÃO (B. 1964)**

*Monocromo Roma I*

signed, titled and dated 'Monocromo Roma I 2016 A. Varejão.'  
(on the reverse)  
oil and plaster on canvas  
70¾ x 70¾ in. (180 x 180 cm.)  
Executed in 2016.

\$350,000-550,000



435

**REBECCA WARREN (B. 1965)**

*The Nude*

hand-painted bronze  
92½ x 13½ x 9½ in. (235 x 34.3 x 24.1 cm.)  
Executed in 2014. This work is from an edition of three uniquely  
painted works plus one artist's proof.

\$150,000-200,000



PROPERTY FROM AN IMPORTANT NEW YORK COLLECTION

436

**ANGEL OTERO (B. 1981)**

*Untitled*

signed and dated 'Angel Otero 2011' (on the reverse)  
oil and oil paint skins on canvas  
73½ x 87½ x 4 in. (186.7 x 222.3 x 10.2 cm.)  
Executed in 2011.

\$50,000-70,000





PROPERTY FROM A PRIVATE AMERICAN COLLECTION

437

**YAYOI KUSAMA (B. 1929)**

*Drifting Waves*

signed and dated '1978 YAYOI KUSAMA' (lower left); signed again, titled in Japanese and dated again 'YAYOI KUSAMA 1978' (on the reverse)  
spray enamel on paperboard  
10¾ x 9½ in. (27.3 x 24.1 cm.)  
Executed in 1978.

\$20,000-30,000



438

**JENNY HOLZER (B. 1950)**

*Arno Pair*

incised with the artist's initials and number 'JH1642 1/6 ELEMENT 1/2' (on the underside of the first element); incised again with the artist's initials and number 'JH1642 1/6 ELEMENT 2/2' (on the underside of the second element)  
pair of curved Carrara White marble benches  
each: 18 x 28 x 100 in. (45.7 x 71.1 x 254 cm.)  
Executed in 2010. This work is number one from an edition of six plus one artist's proof.

\$400,000-600,000



439

**SOL LEWITT (1928-2007)**

*Not Straight Brushstrokes in All Directions*

signed and dated 'S Lewitt 93' (lower right)  
gouache on paper  
30 x 22 in. (76.2 x 55.9 cm.)  
Painted in 1993.

\$30,000-50,000



440

**SOL LEWITT (1928-2007)**

*Untitled (Cube/Corner)*

signed and dated 'S Lewitt 1989' (lower right)  
gouache on paper  
29¾ x 22 in. (75.6 x 55.9 cm.)  
Painted in 1989.

\$20,000-30,000



441

**SOL LEWITT (1928-2007)**

*Horizontal Yellow Lines*

signed, titled, inscribed and dated 'Horizontal Yellow Lines - Milan - July 9 1971 Sol LeWitt' (on the reverse)  
ink on paper  
14¼ x 14¼ in. (36.2 x 36.2 cm.)  
Executed in 1971.

\$25,000-35,000



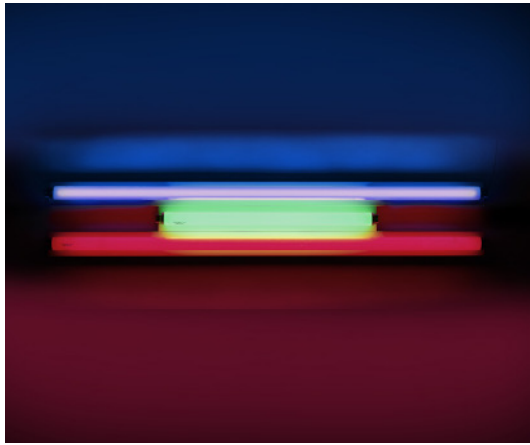
442

**ENRICO CASTELLANI (1930-2017)**

*Superficie bianca*

signed, titled and dated 'Castellani - superficie bianca - 2001' (on the overlap)  
acrylic on shaped canvas  
59 x 79 in. (149.9 x 200.7 cm.)  
Painted in 2001.

\$400,000-600,000



443

**DAN FLAVIN (1933-1996)**

*Untitled*

ultraviolet, green and red fluorescent light  
8 x 48 x 3 7/8 in. (20.3 x 121.9 x 9.9 cm.)  
Executed in 1995. This work is number two from an edition of five, of which three were fabricated, and is accompanied by a certificate of authenticity signed by the artist.

\$120,000-180,000

446

**ROBERT RYMAN (B. 1930)**

*Part 3*

signed and dated 'Ryman 93' (left edge); signed and dated again 'Ryman 93' and titled 'Part 3' (on the reverse)  
oil on corrugated conservation board with metal fasteners  
18 x 18 in. (45.7 x 45.7 cm.)  
Executed in 1993.

\$80,000-120,000



444

**JOHN MCCRACKEN (1934-2011)**

*Slate*

plywood, fiberglass and resin  
4 1/2 x 36 x 5 1/2 in. (11.4 x 91.4 x 14 cm.)  
Executed in 2005.

\$50,000-70,000



447

**ANTONY GORMLEY (B. 1950)**

*SCAFFOLD VII*

4mm square section stainless steel bar  
76 1/8 x 14 1/4 x 18 3/8 in. (193.2 x 36.2 x 46.7 cm.)  
Executed in 2016. This work is unique.

\$250,000-350,000

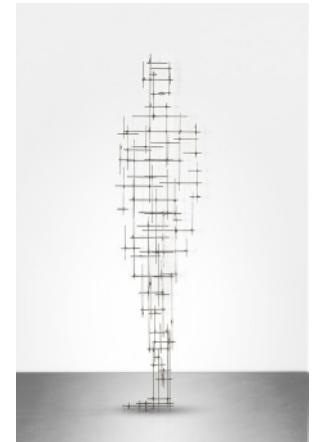


Photo: © Antony Gormley

445

**RICHARD SERRA (B. 1938)**

*Untitled #55*

paintstick on paper  
39 3/4 x 40 in. (101 x 101.6 cm.)  
Executed in 2001.

\$300,000-500,000



448

**MARK GROTJAHN (B. 1968)**

*Untitled (Full Color Butterfly #720)*

signed twice, titled and dated 'Untitled (full color Butterfly #720) 2006  
Mark Grotjahn MARK GROT' (on the reverse)  
colored pencil on paper  
19 7/8 x 18 3/4 in. (50.5 x 47.6 cm.)  
Executed in 2006.

\$120,000-180,000





449

**RICHARD SERRA (B.1938)**

*Ramble 3-9*

lithographic crayon on paper  
21¾ x 29¾ in. (55.9 x 76.2 cm.)  
Executed in 2015.

\$80,000-120,000

452

**ROBERT LONGO (B. 1953)**

*Untitled (Black Blood)*

signed and dated 'R Longo 08' (lower right)  
charcoal on paper  
57 x 48 in. (144.8 x 121.9 cm.)  
Executed in 2008.

\$300,000-400,000



450

**WADE GUYTON (B. 1972)**

*Untitled (Striped)*

signed and dated 'Wade Guyton 2010' (on the overlap)  
Epson UltraChrome inkjet on linen  
84 x 69 in. (213.4 x 175.3 cm.)  
Executed in 2010.

\$300,000-500,000

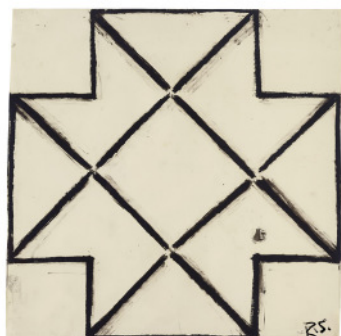
453

**MARILYN MINTER (B. 1948)**

*Shit Kicker*

signed 'M. Minter' (on a paper label affixed to the reverse)  
chromogenic print  
59½ x 85½ in. (151.1 x 217.2 cm.)  
Executed in 2006. This work is number three from an edition of three plus two artist's proofs.

\$40,000-60,000



451

**RICHARD SERRA (B.1938)**

*12 Plates in a Cross*

signed with the artist's initials 'R.S.' (lower right)  
paintstick on paper  
59¾ x 60¾ in. (151.8 x 154.3 cm.)  
Executed in 1973.

\$150,000-200,000

454

**IRVING PENN (1917-2009)**

*Poppy: Burgundy (New York, 1968)*

signed, titled, numbered and dated 'Irving Penn Poppy: Burgundy (New York, 1968) 20' and stamped photographer's/Conde Nast copyright credit (on the reverse)  
pigment print, flush-mounted on board, printed September 2006  
19¾ x 17 in. (50.5 x 43.2 cm.)  
Photographed in 1968; printed in 2006. This work is from an edition of 20.

\$60,000-80,000





PROPERTY FROM A PROMINENT COLLECTION

455

**ANDREAS GURSKY (B. 1955)**

*Stateville, Illinois*

signed, titled, numbered and dated 'Stateville, Illinois 2002 Editionsnr. 1/6 Andreas Gursky' (on a paper label affixed to the reverse)  
chromogenic print mounted on Plexiglas in artist's frame  
81 x 120½ in. (206 x 307 cm.)  
Executed in 2002. This work is number one from an edition of six.

\$200,000-300,000



PROPERTY FROM A NEW YORK CHARITABLE FAMILY TRUST

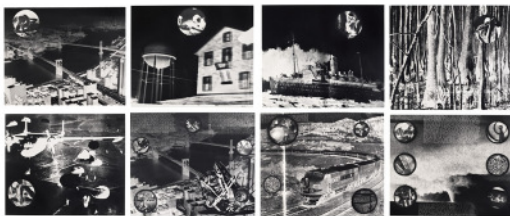
°456

**WILLIAM KENTRIDGE (B. 1955)**

*Drawing from "Preparing the Flute" (Stage Setting)*

signed twice 'KENTRIDGE' (lower left and lower right)  
charcoal and pastel on collaged paper  
31½ x 47¼ in. (80 x 120 cm.)  
Executed in 2004-2005.

\$40,000-60,000



457

**DAVID WOJNAROWICZ (1954-1992)**

*Sex Series (For Marion Scemama)*

signed, titled, numbered and dated '2/12 SEX SERIES 1989/90 David Wojnarowicz' (on the reverse of each sheet)  
eight vintage gelatin silver prints, in artist's frames  
each sheet: 16 x 19 ½ (40.6 x 50.3 cm.)  
each framed: 27 x 31 in. (68.6 x 78.7 cm.)  
Executed in 1989-1990. This set is number two from an edition of twelve plus one artist's proof.

\$100,000-150,000

458

**JENNY HOLZER (B. 1950)**

*Selection from Survival: When there is no safe place...*

incised with the artist's signature and number 'Jenny Holzer JH486 13/20' (on the underside)  
Verde antique marble footstool  
17 x 29 x 16½ in. (43.2 x 73.7 x 41.9 cm.)  
Executed in 1983-1985. This work is number thirteen from an edition of twenty.

\$40,000-60,000



459

**RICHARD PRINCE (B. 1949)**

*Untitled (Girlfriend)*

signed, inscribed and dated 'Richard Prince ap 1993' (on a paper label affixed to the reverse)  
Ektacolor photograph  
74½ x 50 in. (189.2 x 127 cm.)  
Executed in 1993. This work is the artist's proof aside from an edition of two plus one artist's proof.

\$250,000-350,000



460

**YOSHITOMO NARA (B. 1959)**

*Untitled*

colored pencil on envelope  
8 x 7½ in. (20.1 x 18.8 cm.)  
Executed in 2003.

\$80,000-120,000





461

**YOSHITOMO NARA (B. 1959)**

*Untitled*

signed in Japanese and dated "97" (upper right); inscribed 'last kamikaze' (lower right)  
pen and colored pencil on paper  
9 x 6 in. (22.9 x 15.2 cm.)  
Executed in 1997.

\$40,000-60,000



462

**CHRISTOPHER WOOL (B. 1955)**

*Untitled*

embossed with the artist's signature 'WOOL' (lower right)  
alkyd on rice paper  
74 x 37½ in. (188 x 95.3 cm.)  
Painted in 1990.

\$80,000-120,000



463

**DUANE HANSON (1925-1996)**

*Cowboy*

denim, leather, metal and fabric on bronze polychromed in oil  
72 x 24 x 18 in. (182.9 x 61 x 45.7 cm.)  
Executed in 1984-1985. This work is number two from an edition of nine unique versions.

\$250,000-350,000

464

**GEORGE CONDO (B. 1957)**

*Untitled*

oil on canvas  
43½ x 39½ in. (110.5 x 100.3 cm.)  
Painted in 1985.

\$200,000-300,000



PROPERTY FROM A NEW YORK CHARITABLE FAMILY TRUST

°465

**GEORGE CONDO (B. 1957)**

*Untitled*

signed and dated 'Condo '84' (on the overlap)  
oil on canvas  
25¼ x 21¾ in. (65.4 x 54.3 cm.)  
Painted in 1984.

\$50,000-70,000



PROPERTY FROM A NEW YORK CHARITABLE FAMILY TRUST

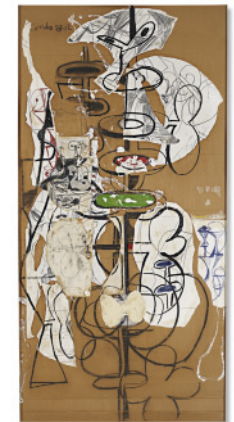
°466

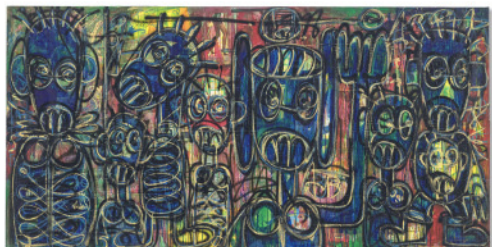
**GEORGE CONDO (B. 1957)**

*Untitled*

signed and dated 'Condo 87.12' (upper left)  
oil, wax crayon, charcoal, graphite and paper collage on cardboard  
96 x 48 in. (243.8 x 121.9 cm.)  
Executed in 1987.

\$60,000-80,000





467

**ABOUDIA (B.1983)**

*Nouchi Graffiti: Les Coquins et Leur Chien*

signed 'ABOUDIA' (lower right)  
acrylic, spray paint, paper collage and oil pastel on denim  
59 x 118 in. (149.9 x 299.7 cm.)  
Executed in 2021.

\$50,000-70,000

PROPERTY FROM A NEW YORK CHARITABLE FAMILY TRUST

°470

**SECUNDINO HERNÁNDEZ (B. 1975)**

*Untitled*

signed and dated 'Secundino Hernández 15' (on the reverse)  
oil, acrylic, gouache and alkyd on canvas  
112½ x 99 (285.8 x 251.5 cm.)  
Painted in 2015.

\$60,000-80,000



°468

**JOE BRADLEY (B. 1975)**

*Heads*

signed and dated 'Joe Bradley 2011' (on the overlap)  
oil on canvas  
78¾ x 98½ in. (200 x 250 cm.)  
Painted in 2011.

\$250,000-350,000

PROPERTY FROM A NEW YORK CHARITABLE FAMILY TRUST

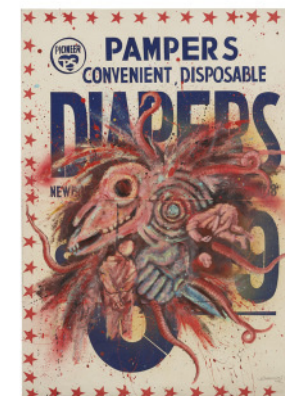
°471

**DAVID WOJNAROWICZ (1954-1992)**

*Untitled (Pampers)*

signed and dated 'WOJNAROWICZ '84 NYC' (lower right)  
acrylic on found supermarket poster  
44 x 32 in. (111.8 x 81.3 cm.)  
Executed in 1984.

\$30,000-40,000



PROPERTY FROM A NEW YORK CHARITABLE FAMILY TRUST

°469

**MARK BRADFORD (B. 1961)**

*Untitled (Shoe)*

paper collage  
30 x 31½ in. (76.2 x 80 cm.)  
Executed in 2003.

\$100,000-150,000

472

**LOUIS FRATINO (B.1993)**

*Portrait*

signed and dated 'Louis Fratino 2016' (on the reverse)  
wax crayon, marker and ink on paper  
11¾ x 8¾ in. (29.5 x 21 cm.)  
Executed in 2016.

\$15,000-20,000





473

**DANA SCHUTZ (B. 1976)**

*Arrangement*

signed and dated 'Dana Schutz 2010' (on the reverse)  
oil on canvas  
72 x 90 in. (182.9 x 228.6 cm.)  
Painted in 2010.

\$300,000-500,000



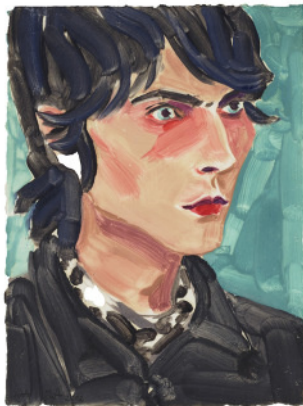
474

**ALEX KATZ (B. 1927)**

*Woman in a Hat*

incised with the artist's signature and date 'Alex Katz 03' (upper center)  
oil on Masonite  
16 x 11 7/8 in. (40.6 x 30.2 cm.)  
Painted in 2003.

\$30,000-50,000



475

**ELIZABETH PEYTON (B. 1965)**

*Nick (One)*

signed and dated 'Elizabeth Peyton 2002' (lower left)  
monotype on paper  
12 x 9 in. (30.5 x 22.9 cm.)  
Executed in 2002.

\$30,000-50,000

476

**DANIELLE ORCHARD (B. 1985)**

*Untitled*

acrylic on canvas  
14 x 11 in. (35.5 x 27.9 cm.)  
Painted in 2020.

\$8,000-12,000



477

**NINA CHANEL ABNEY (B. 1982)**

*Untitled (Black Love)*

signed and dated 'NINA CHANEL ABNEY 2016' (on the reverse)  
acrylic, spray paint and paper collage on panel  
24 x 18 in. (61 x 45.7 cm.)  
Executed in 2016.

\$50,000-70,000



478

**SHARA HUGHES (B. 1981)**

*Chill Pill*

signed, titled and dated 'SHARA HUGHES "Chill Pill" 2016' (on the reverse)  
oil, acrylic and dye on canvas  
36 x 30 in. (91.4 x 76.2 cm.)  
Executed in 2016.

\$100,000-150,000







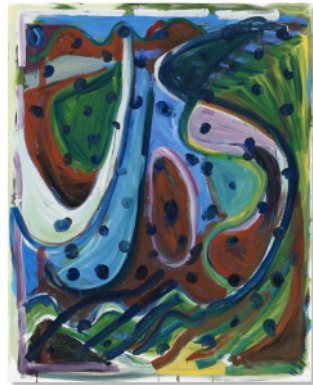
479

**GENIEVE FIGGIS (B.1972)**

*King & Queen*

signed and dated 'genieve figgis 2015' (on the reverse)  
acrylic on canvas  
20 x 16 in. (50.8 x 40.6 cm.)  
Painted in 2015.

\$30,000-50,000



°480

**JOSH SMITH (B. 1978)**

*Untitled*

signed and dated 'Josh Smith 2010' (on the overlap)  
oil on canvas  
60 x 48 in. (152.4 x 121.9 cm.)  
Painted in 2010.

\$30,000-40,000



481

**SALMAN TOOR (B. 1983)**

*Humiliated Ancestor #2*

oil on panel  
10 x 8 in. (25.4 x 20.3 cm.)  
Painted in 2016.

\$30,000-50,000



482

**TODD BIENVENU (B. 1980)**

*Crowd Surfing*

oil on canvas  
76 x 86 in. (193 x 218 cm.)  
Painted in 2020.

\$15,000-20,000



483

**KAWS (B.1974)**

*KAWSBOB (IT TOOK FIVE MINUTES), PACKAGE PAINTING SERIES*

signed and dated 'KAWS „10' (on the reverse)  
acrylic on canvas in blister package with printed card  
18 x 15 x 3 in. (45.7 x 38.1 x 7.6 cm.)  
Executed in 2010.

\$150,000-200,000



484

**PETRA CORTRIGHT (B. 1986)**

*shape file specs RED*

digital painting on aluminum  
78½ x 59 in. (199.4 x 149.9 cm.)  
Executed in 2013.

\$20,000-30,000



PROPERTY FROM A NEW YORK CHARITABLE FAMILY TRUST

°485

**CHARLINE VON HEYL (B. 1960)**

*Check My Bucket*

signed, inscribed and dated 'Check Your Bucket' Ch V Heyl 2001' (on the reverse)  
oil on canvas

82 x 78 in. (208.3 x 198.1 cm.)  
Painted in 2001.

\$80,000-120,000

488

**MATTHEW BARNEY (B. 1967)**

*Cremaster 2: The Book of Mormon*

signed and dated 'Matthew Barney 99' (on the reverse)  
chromogenic print in self-lubricating frame  
54 x 43 x 1 in. (137.2 x 109.2 x 2.5 cm.)

Executed in 1999. This work is number two from an edition of six.

\$10,000-15,000



PROPERTY FROM A PROMINENT COLLECTION

486

**THEASTER GATES (B. 1973)**

*Roofing Exercise 3*

wood, roofing paper and tar  
72 x 48 x 4 in. (182.9 x 121.9 x 10.2 cm.)  
Executed in 2012.

\$40,000-60,000

489

**CINDY SHERMAN (B. 1954)**

*Untitled*

chromogenic color print, in artist's frame  
overall: 46 x 40 in. (116.8 x 101.6 cm.)

Executed in 1989. This work is number one from an edition of six.

\$80,000-120,000



487

**MATTHEW BARNEY (B. 1967)**

*Cremaster 3: The Five Points of Fellowship*

signed and dated 'Matthew Barney 2002' (on the reverse)  
chromogenic print in self-lubricating frame  
60 x 36 in. (152.4 x 91.4 cm.)

Executed in 2002. This work is number five from an edition of six plus one artist's proof.

\$10,000-15,000

490

**RICHARD PRINCE (B. 1949)**

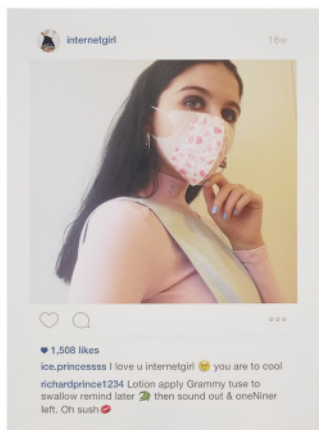
*Untitled*

signed and dated 'Richard Prince 2014-15' (on the overlap)  
acrylic, inkjet and oilstick on canvas

69½ x 78½ in. (176.5 x 199.4 cm.)  
Executed in 2014-2015.

\$200,000-300,000





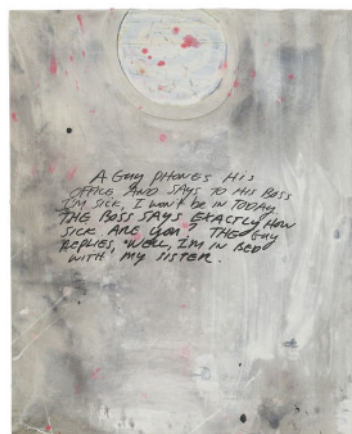
491

**RICHARD PRINCE (B. 1949)**

*Untitled (Portrait)*

signed and dated 'Richard Prince 2014' (on the overlap)  
inkjet on canvas  
65¾ x 48¾ in. (167 x 123.8 cm.)  
Executed in 2014.

\$50,000-70,000



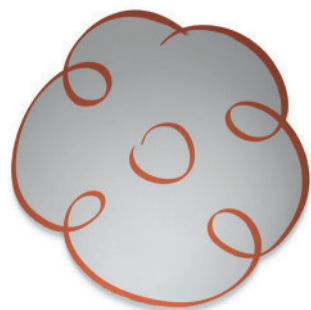
492

**RICHARD PRINCE (B. 1949)**

*Untitled (t-shirt)*

signed and dated 'Richard Prince 1998' (on the reverse)  
acrylic, silkscreen and t-shirt on canvas  
26½ x 21 in. (67.3 x 53.3 cm.)  
Executed in 1999.

\$30,000-40,000



493

**JEFF KOONS (B. 1955)**

*Flower Drawing (Orange)*

signed and numbered 'Jeff Koons 5/13' (on the reverse)  
mirror-polished stainless steel with transparent color coating  
29¾ x 29¾ x ¾ in. (75.9 x 75.9 x 1.6 cm.)  
Executed in 2011. This work is number five from an edition of thirteen plus two artist's proofs.

\$70,000-100,000

494

**JOSH SPERLING (B. 1984)**

*Untitled (Pyramid 2)*

signed and dated 'Sperling '18' (on the reverse)  
acrylic on shaped and joined canvases mounted on panel, in five parts  
27 x 30 in. (68.6 x 76.2 cm.)  
Executed in 2018.

\$20,000-30,000



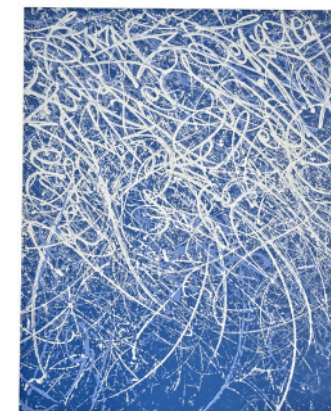
495

**JOSE PARLA (B. 1973)**

*Time's Will*

signed, inscribed, titled and dated 'Time's Will 2020 © Jose Parla' (on the reverse)  
oil, acrylic, enamel, collage and plaster on canvas  
50 x 40 in. (127 x 101.6 cm.)  
Executed in 2020.

\$40,000-60,000



496

**UGO RONDINONE (B. 1964)**

*FÜNFUNDZWANZIGSTERAUGUSTZWEITAUSENDUNDEL F*

signed and dated 'u rondinone 2011' (on the reverse)  
acrylic on canvas  
36 x 36 in. (91.4 x 91.4 cm.)  
Executed in 2011. This work is accompanied by a certificate of authenticity signed by the artist.

\$20,000-30,000





PROPERTY FROM THE FOUNDATION MIREILLE AND JAMES LÉVY  
497

**ALEXANDER CALDER (1898-1976)**

*Mushroom Has Red Face*

standing mobile—sheet metal, rod, wire and paint  
32 3/8 x 24 1/2 x 20 1/2 in. (82.2 x 62.2 x 52.1 cm.)  
Executed in 1949.

\$400,000-600,000



498

**ANDY WARHOL (1928-1987)**

*Ladies and Gentlemen (Alphonso Panelli)*

signed and dated 'Andy Warhol 75' (on the overlap)  
acrylic and silkscreen ink on canvas  
32 x 26 in. (81.3 x 66.0 cm.)  
Painted in 1975.

\$400,000-600,000



499

**PETER SAUL (B. 1934)**

*Picasso's Girl in the Mirror I*

signed and dated 'Saul '78' (lower right)  
acrylic on paper  
40 x 30 in. (101.6 x 76.2 cm.)  
Painted in 1978.

\$80,000-120,000

500

**ROBERT COLESCOTT (1925-2009)**

*Artistry + Reality, Mexicali Rose*

signed and dated 'R Colescott 80' (lower left); signed again with the artist's initials, titled and dated again 'RHC SEPT. 1980 ARTISTRY + REALITY - MEXICALI ROSE' (on the overlap)  
acrylic on canvas  
16 x 18 in. (40.6 x 45.7 cm.)  
Painted in 1980.

\$40,000-60,000



501

**ANDY WARHOL (1928-1987)**

*Untitled (Mick Jagger and Charlie Watts)*

signed 'Andy Warhol' (lower right); stamped with the Andy Warhol Authentication Board, Inc. stamp and numbered 'A117.107' (on the reverse)  
photo transfer on acetate and paper collage on paper  
19 x 17 1/2 in. (48.3 x 44.5 cm.)  
Executed circa 1977. This work is accompanied by a certificate of authenticity issued by the Andy Warhol Art Authentication Board, Inc. and numbered with the identification number A117.107.

\$70,000-100,000



502

**ANDY WARHOL (1928-1987)**

*Terrier*

stamped with the Estate of Andy Warhol and the Andy Warhol Foundation stamps (on the reverse)  
acrylic and silkscreen ink on canvas  
10 7/8 x 13 3/4 in. (27.5 x 35 cm.)  
Executed in 1983.

\$80,000-120,000





503

**ANDY WARHOL (1928-1987)**

*Beatles*

stamped with the Estate of Andy Warhol and the Andy Warhol Foundation stamps and numbered 'UP13.13' (on the reverse)  
screenprint in colors on Lenox Museum Board  
31 x 40¼ in. (78.7 x 102.2 cm.)  
Executed in 1980. This work is one of a small number of impressions.

\$50,000-70,000



506

**ROBERT RAUSCHENBERG (1925-2008)**

*Untitled*

signed and dated 'Rauschenberg 68' (lower center)  
gouache, solvent transfer, colored pencil and graphite on paper  
22½ x 29¾ in. (56.2 x 75.9 cm.)  
Executed in 1968.

\$80,000-120,000



PROPERTY FROM A NEW YORK CHARITABLE FAMILY TRUST

°504

**JEAN DUBUFFET (1901-1985)**

*Sequence XIV*

signed with the artist's initials and dated 'J.D. 79' (lower left)  
acrylic and paper collage on paper  
13¾ x 10½ in. (35.3 x 25.7 cm.)  
Executed in 1979.

\$60,000-80,000



507

**HELEN FRANKENTHALER (1928-2011)**

*Untitled*

signed 'Frankenthaler' (lower right)  
acrylic on paper  
29¾ x 42 in. (75.6 x 106.7 cm.)  
Painted in 1978.

\$80,000-100,000



PROPERTY FROM A NEW YORK CHARITABLE FAMILY TRUST

°505

**JEAN DUBUFFET (1901-1985)**

*Site avec 14 personnages*

signed with the artist's initials and dated 'J.D. 80' (lower center)  
India ink on paper  
20¾ x 13¾ in. (50.1 x 34.9 cm.)  
Executed in 1980.

\$40,000-60,000



508

**YVONNE THOMAS (1913- 2009)**

*The Bridge*

signed and dated 'Yvonne Thomas 1953' (on the reverse)  
oil on canvas  
40 x 48 in. (101.6 x 121.9 cm.)  
Painted in 1953.

\$30,000-50,000



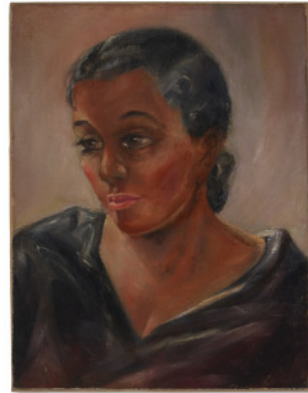
PROPERTY FROM A PRIVATE AMERICAN COLLECTION  
509

**CHARLES ALSTON (1907-1977)**

*Troubadour*

signed 'Alston' (lower right)  
oil on canvas  
40 x 30 in. (101.6 x 76.2 cm.)  
Painted circa 1955.

\$60,000-80,000



PROPERTY FROM A PRIVATE AMERICAN COLLECTION  
510

**CHARLES WHITE (1918-1979)**

*Contemplation*

signed 'Charles' (lower right)  
oil on canvas laid down on canvas  
18 1/4 x 14 in. (46.1 x 35.6 cm.)  
Painted circa 1934.

\$30,000-50,000



PROPERTY FROM THE COLLECTION OF MYRON CALHOUN  
511

**ROMARE BEARDEN (1911-1988)**

*Mecklenberg Morning*

signed 'Bearden' (lower left)  
watercolor, graphite and printed paper collage on panel  
9 x 6 in. (22.9 x 15.2 cm.)  
Executed in 1979.

\$70,000-100,000

512

**DINDGA MCCANNON (B. 1947)**

*Harlem Women Series Cameo circa 1950*

signed, titled and dated "'Harlem Women Series Cameo circa 1950'  
dindga 2012' (on a fabric label affixed to the reverse)  
acrylic, lace, snakeskin, Angelina fibers, sequins, beads and fabric  
collage on felt-backed cotton  
18 1/4 x 15 1/2 in. (46.4 x 39.4 cm.)  
Executed in 2012.

\$10,000-15,000



PROPERTY FROM A PRIVATE AMERICAN COLLECTION  
513

**MICHAEL (CORINNE) WEST (1908-1991)**

*Franconia Notch*

signed, titled and dated 'Michael West/'Franconia Notch'/Aug 1965'  
(on the reverse)  
oil and postcard collage on canvas  
50 x 36 in. (127 x 91.4 cm.)  
Executed in 1965.

\$30,000-50,000



AN ENQUIRING EYE: PROPERTY FROM A DISTINGUISHED  
PRIVATE COLLECTOR

514

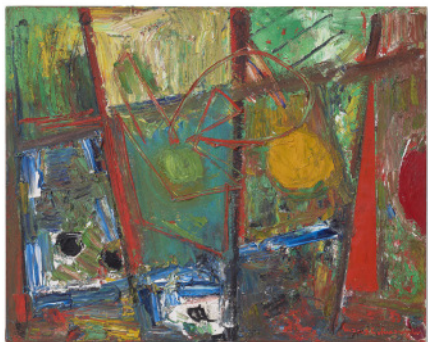
**ELAINE DE KOONING (1918 - 1989)**

*Red and Yellow Oxide Wall (Cave #176)*

signed with the artist's initials 'E. de K' (lower right); signed with the  
artist's initials again, titled and dated 'E de K "Red and Yellow Oxide  
Wall" '87' (on the stretcher)  
acrylic on canvas  
30 x 40 in. (76.2 x 101.6 cm.)  
Painted in 1987.

\$40,000-60,000





515

**HANS HOFMANN (1880-1966)**

*Composition No. 15*

signed and dated '53 hans hofmann' (lower right); signed again, titled, inscribed and dated again 'Composition No. 15/53 (Teecatle) [sic] hans hofmann' (on the stretcher)  
oil on canvas  
30 x 38 in. (76.2 x 96.5 cm.)  
Painted in 1953.

\$150,000-200,000

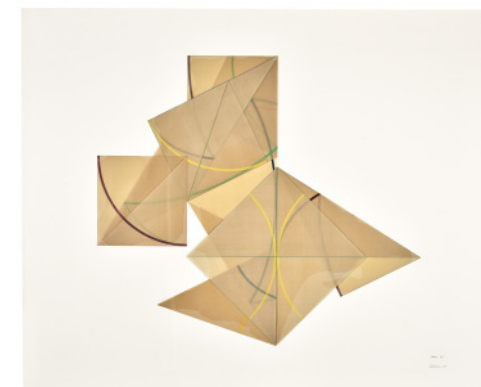
518

**DOROTHEA ROCKBURNE (B. 1932)**

*Arena VI*

signed, titled and dated 'Arena VI Rockburne, 78' (lower right)  
colored pencil, varnish and glue on vellum collage mounted on rag board  
47 x 58 1/4 in. (119.4 x 149.2 cm.)  
Executed in 1978.

\$20,000-30,000



PROPERTY FROM  
**SONDRA  
GILMAN**  
THE ESTATE OF



516

**THEODOROS STAMOS (1922-1997)**

*The Puritan*

signed, titled and dated 'STAMOS "THE PURITAN" 1959' (on the stretcher)  
oil on canvas  
70 7/8 x 60 1/8 in. (180 x 152.8 cm.)  
Painted in 1959.

\$70,000-100,000

519

**ANNE TRUITT (1921-2004)**

*Foreign Shore*

signed, titled and dated 'FOREIGN SHORE Truitt 79' (on the reverse)  
acrylic on canvas  
8 x 34 1/8 in. (20.3 x 86.7 cm.)  
Painted in 1979.

\$50,000-70,000



PROPERTY FROM  
**SONDRA  
GILMAN**  
THE ESTATE OF



517

**LOUISE NEVELSON (1899-1988)**

*Tropical Tree X*

black paint on welded aluminum  
77 x 50 x 18 in. (195.6 x 127 x 71.1 cm.)  
Executed in 1972.

\$80,000-120,000

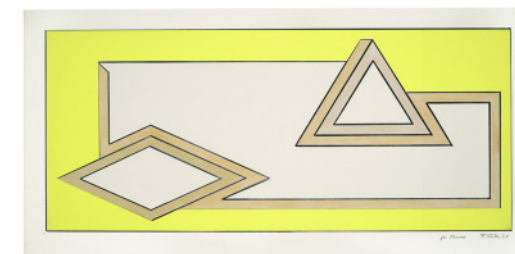
520

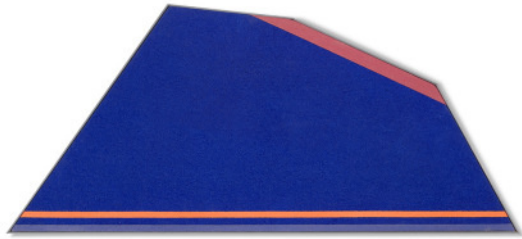
**FRANK STELLA (B. 1936)**

*Untitled (Study for Stacks)*

signed, dedicated and dated "for Manny F. Stella '67" (lower right)  
ink and paper collage on paper  
17 3/4 x 36 1/8 in. (45.1 x 91.8 cm.)  
Executed in 1967.

\$50,000-70,000





521

**KENNETH NOLAND (1924-2010)**

*Arch Blue with Orange, Red, Blue*

signed, titled and dated 'ARCH-BLUE W ORANGE-RED-BLUE 1980  
Kenneth Noland ©' (on the reverse)  
acrylic on shaped canvas  
17½ x 39½ in. (44.5 x 100.3 cm.)  
Painted in 1980.

\$80,000-120,000



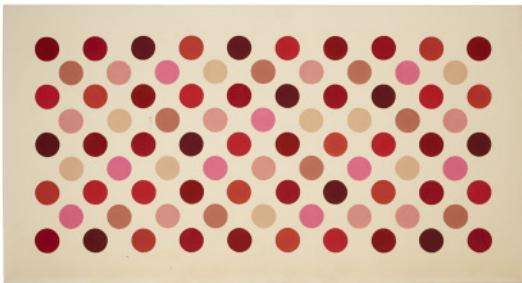
522

**KENNETH NOLAND (1924-2010)**

*Songs: "What's New" (Bobby Haggart)*

signed, titled and dated 'SONGS: "WHAT'S NEW"  
(BOBBY HAGGART) Kenneth Noland © 1984' (on the reverse)  
acrylic on canvas  
83½ x 69½ in. (212.1 x 176.5 cm.)  
Painted in 1984.

\$150,000-200,000



523

**THOMAS DOWNING (1928-1985)**

*Grid Ten*

signed, titled and dated 'GRID TEN - 1/70 - DOWNING'  
(on the overlap)  
acrylic on canvas  
64 x 120¼ in (162.6 x 305.4 cm.)  
Painted in 1970.

\$70,000-90,000

524

**FRANZ WEST (1947-2012)**

*Trough*

steel rebar, fabric and polyurethane foam  
32 x 58 x 29 in. (81.2 x 147.3 x 73.7 cm.)  
Executed in 1996. This work is unique.

\$40,000-60,000



525

**STUDIO JOB (EST. 1998)**

*Banana Lamp (Model B)*

incised 'JOB 6/6 CWG' (on the underside)  
polished bronze, etched glass, paint and LED  
11.8 x 11.8 x 7.9 in. (30 x 30 x 20 cm.)  
Executed in 2015. This work is number six from an edition of six  
plus two artist's proofs.

\$8,000-12,000



526

**THE HAAS BROTHERS (B. 1984)**

*Tony Mo-hawk Mini Beast*

incised 'THE HAAS BROTHERS 2017' (on the underside)  
caribou fur with cast bronze, silver plated octopus feet and six  
hand-carved horns  
17 x 12½ x 11 in. (43.2 x 31.8 x 27.9 cm.)  
Executed in 2017. This work is unique.

\$20,000-30,000







527

**LYNDA BENGLIS (B. 1941)**

*Knot II*

sand-cast aluminum  
11½ x 27 x 20½ in. (29.2 x 68.6 x 52.1 cm.)  
Executed in 1991.

\$60,000-80,000

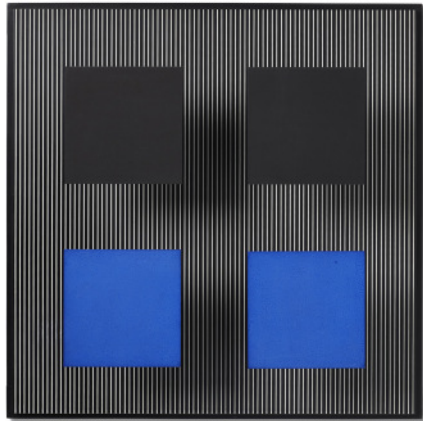
530

**ARNALDO POMODORO (B. 1926)**

*Sfera*

incised with the artist's signature and number 'Arnaldo Pomodoro 1/6'  
(on the base)  
bronze, with base  
11½ x 9⅞ x 9⅞ in. (29.21 x 25.10 x 25.10 cm.)  
Executed in 1982. This work is number one from an edition of six  
plus two artist's proofs.

\$80,000-120,000



528

**JESUS RAFAEL SOTO (1923-2005)**

*Untitled (Cuadrados negra y azul)*

signed, inscribed and dated 'PARA MI NEGRA QUERIDA SOTO 1974'  
(on the reverse)  
acrylic on wood with painted metal  
23¾ x 23¾ x 6 in. (60.3 x 60.3 x 15.2 cm.)  
Executed in 1974. This work is unique.

\$100,000-150,000

531

**ALEXANDER CALDER (1898-1976)**

*Untitled*

signed, dedicated and dated 'à Ray & Jeanne Sutter, Sandy Calder 70'  
(lower right)  
gouache and ink on paper  
29¼ x 43½ in. (74.3 x 109.5 cm.)  
Painted in 1970.

\$40,000-60,000



529

**MARK DI SUVERO (B. 1933)**

*Cobu*

incised with the artist's signature 'Mark di Suvero' (on the base)  
welded steel, in two parts  
42 x 48 x 47 in. (106.7 x 121.9 x 119.4 cm.)  
Executed in 1974.

\$50,000-70,000

# POST-WAR & CONTEMPORARY ART INDEX

## A

Abercrombie, G. 203  
Abney, N. C. 477  
Aboudia 219, 467  
Adeniyi-Jones, T. 416  
Alston, C. 509  
Andre, C. 322  
Avedon, R. 225

## B

Baechler, D. 345  
Baldessari, J. 134, 181, 184  
Barnes, E. 141  
Barney, M. 487, 488  
Bartlett, J. 350  
Basquiat, J. M. 196, 200, 201, 202  
Bearden, R. 143, 511  
Beavers, G. 224  
Bell, L. 145  
Benglis, L. 152, 153, 160, 168, 169, 527  
Bengston, B. A. 147  
Berman, W. 334  
Bidlo, M. 301  
Bienvenu, T. 482  
Binion, M. 162  
Bleckner, R. 343  
Boafo, A. 108  
Borofsky, J. 355  
Bradford, M. 469  
Bradley, J. 468  
Brown, C. 354  
Brown, D. 406  
Brown, R. 130  
Büttner, W. 360

## C

Calder, A. 140, 497, 531  
Calvin, B. 217  
Castellani, E. 442  
Chamberlain, J. 173, 185  
Charlesworth, S. 187  
Chia, S. 310, 312  
Clegg, O. 411  
Clemente, F. 309, 311, 314, 316  
Colescott, R. 500  
Condo, G. 112, 198, 464, 465, 466  
Condo, G. 342  
Cooling, J. 307  
Cortright, P. 484  
Cudahy, A. 422

## D

Dávila, J. 432  
De Kooning, E. 514  
Delaney, B. 167  
Di Suvero, M. 529  
Dine, J. 244  
Dix, S. 405  
Dokoupil, J. G. 358  
Downing, T. 523  
Drexler, L. 105  
Drexler, R. 306

Dubuffet, J. 504, 505  
Duchamp, M. 302  
Dunham, C. 222  
Dwi Antono, R. 205

## E

Eagleton, A. 403  
Eliasson, O. 431

## F

Fetting, R. 330  
Figgis, G. 479  
Finland, T. 339  
Fischer, U. 361  
Fischl, E. 346  
Flanagan, B. 344  
Flavin, D. 179, 443  
Förg, G. 324  
Foulkes, L. 332  
Francis, S. 138, 139  
Frankenthaler, H. 120, 507  
Fratino, L. 204, 472

## G

Gaillard, C. 425  
Gates, T. 486  
Gokita, T. 433  
Gorchov, R. 178  
Gormley, A. 447  
Grotjahn, M. 448  
Gursky, A. 455  
Guston, P. 242  
Guyton, W. 450

## H

Haas Brothers 526  
Halley, P. 229, 231, 233  
Hanson, D. 463  
Hernandez, S. 470  
Herold, G. 356  
Hofmann, H. 515  
Holzer, J. 438, 458  
Hopper, D. 253  
Horn, R. 161  
Hughes, S. 103, 218, 478  
Humphries, J. 163  
Hunt, B. 340

## I

Indiana, R. 235, 245  
Innerst, M. 341  
Ismail, I. 220  
Iwamura, E. 210

## J

Job, S. 525  
Johns, J. 172  
Johnson, R. 208  
Judd, D. 157

## K

Kaabi-Linke, N. 430  
Kabakov, I. 426  
Kahn, S. 117, 118  
Kamijo, S. 215  
Kass, D. 363  
Katz, A. 128, 133, 474  
Katz, A. 348  
Kauffman, C. 146  
KAWS 483  
Kelly, E. 156  
Kentridge, W. 456  
Keriwck, J. 116  
Khomenko, L. 429  
Kienholz, E. 148  
Kimmel, L. 401  
Kippenberger, M. 326, 328, 329  
Kippenberger, M., Oehlen, A. 331  
Kjærsgaard, M.O. 412  
Knoebel, I. 230  
Koons, J. 124, 493  
Kroger, B. 193  
Kusama, Y. 101, 121, 437

## L

Landers, S. 365  
Lane, L. 357  
Lee, A. 419  
Leigh, A. 408  
LeWitt, S. 174, 177, 439, 440, 441  
Lichtenstein, R. 123, 125  
Ligon, G. 216  
Longevial, I. 407  
Longo, R. 228, 452  
Lyons, K. 404

## M

Marden, B. 321, 323  
Masullo, A. 336  
McCannon, D. 512  
McCracken, J. 444  
Mehretu, J. 104  
Mikhailov, B. 427  
Minter, M. 453  
Mogavero, M. 313  
Murakami, T. 214  
Murakmi, T. and Abloh, V. 211  
Mutu, W. 418

## N

Nagle, R. 150  
Namuyimba, G.C. 109  
Nara, Y. 212, 213, 423, 424, 460, 461  
Ness, R. 421  
Netrabile, S. 402  
Nevelson, L. 517  
Noland, K. 521, 522  
Nozkowski, T. 351  
Nutt, J. 333

## O

Oldenburg, C. 170, 171, 182, 186, 188  
Omofemi, O. 110  
Orchard, D. 415, 476  
Orlando, K. 410  
Ossorio, A. 166  
Otero, A. 420, 436

## P

Parla, J. 495  
Party, N. 111  
Penn, I. 454  
Pensato, J. 195  
Perez, E. 359  
Pettibone, R. 248, 249, 250, 251, 252  
Peyton, E. 475  
Plans, E. 113  
Pomodoro, A. 530  
Price, K. 149, 151  
Prince, R. 459, 490, 491, 492  
Puryear, M. 183

## R

Rauschenberg, R. 506  
Reice, M. 317  
Reinhardt, A. 176  
Reyle, A. 362  
Richter, G. 137  
Riley, B. 158  
Rockburne, D. 518  
Rollins, T. and K.O.S. 335, 338  
Rondinone, U. 496  
Rosenquist, J. 135  
Ruscha, E. 144, 154, 197  
Ryman, R. 446

## S

Sachs, T. 246  
Salome 353  
Samaras, L. 165  
Saul, P. 499  
Scharf, K. 223, 232, 234, 237  
Scherer, Y. 413  
Schifferle, K. 366  
Schutz, D. 207, 473  
Serra, R. 155, 445, 449, 451  
Sherman, C. 194, 226, 227, 489  
Sillman, A. 209  
Smith, D. 190  
Smith, J. 480  
Soto, J. 528  
Sperling, J. 494  
Stamos, T. 516  
Starn, M. and D. 337  
Stella, F. 136, 236, 520  
Stevenson, B. T. 409  
Stingel, R. 159  
Sturtevant, E. 305

## T

Taaffe, P. 315  
Taku, E. 114  
Tansey, M. 199  
Tansey, M. 349  
Teller, J. 428  
Therrien, R. 347  
Thiebaud, W. 106, 107, 122, 132  
Thomas, Y. 508  
Toor, S. 206, 481  
Townley, L. 221  
Truitt, A. 519  
Turk, G. 364  
Twombly, A. 325  
Twombly, C. 175  
Twombly, C. 318, 319, 320

## V

Varejão, A. 434  
von Heyl, C. 485

## W

Warhol, A. 126, 127, 131, 180, 238, 239, 240, 247, 498, 501, 502, 503  
Warhol, A. 303, 304  
Warren, R. 435  
Wesley, J. 129, 241  
Wesselmann, T. 192, 243  
Wesselmann, T. 308  
West, F. 327  
West, F. 524  
West, M. 513  
White, C. 142, 510  
Whitney, S. 102  
Whitten, J. 164  
Wilke, H. 191  
Wilson, R. 352  
Winters, T. 189  
Wojnarowicz, D. 457, 471  
Wong, M. 119  
Wool, C. 462

## Y

Young, C. 414  
Yuskavage, L. 417

## Z

Zuckerman, A. 115

# ILLUSTRATIONS

## FRONT COVER:

LOT 106  
Wayne Thiebaud, *Three Ice Cream Cones*, 1964.  
© 2022 Wayne Thiebaud Foundation / Licensed by VAGA at Artists Rights Society (ARS), New York.

## FRONTISPIECE ONE:

LOT 126  
Andy Warhol, *Marilyn Monroe (Marilyn)*, 1967.  
© 2022 The Andy Warhol Foundation for the Visual Arts, Inc. / Licensed by Artists Rights Society (ARS), New York.

## FRONTISPIECE TWO:

LOT 103  
Shara Hughes, *Weeping Blur*, 2018 (detail).  
© Shara Hughes.

## FRONTISPIECE THREE:

LOT 122  
Wayne Thiebaud, *Downhill Intersection*, 2010.  
© 2022 Wayne Thiebaud Foundation / Licensed by VAGA at Artists Rights Society (ARS), New York.

## FRONTISPIECE FOUR:

LOT 124  
Jeff Koons, *Jim Beam*,  
© Jeff Koons.

## FRONTISPIECE FIVE:

LOT 199  
Mark Tansey, *Study on "Installing the Lens,"* 2000 (detail).  
© Mark Tansey.

## FRONTISPIECE SIX:

LOT 133  
Alex Katz, *Man with Brown Hat*, 1979 (detail).  
© 2022 Alex Katz / Licensed by VAGA at Artists Rights Society (ARS), New York.

## FRONTISPIECE SEVEN:

LOT 194  
Cindy Sherman, *Untitled*, 1981 (detail).  
© Cindy Sherman. Courtesy the artist and Hauser & Wirth.

## FRONTISPIECE EIGHT:

LOT 123  
Roy Lichtenstein, *Collage for CARE Poster*, 1993 (detail).  
© Estate of Roy Lichtenstein.

## FRONTISPIECE NINE:

LOT 127  
Andy Warhol, *Dollar Sign*, 1981 (detail).  
© 2022 The Andy Warhol Foundation for the Visual Arts, Inc. / Licensed by Artists Rights Society (ARS), New York.

## FRONTISPIECE TEN:

LOT 107  
Wayne Thiebaud, *Yo-Yos*, 1963.  
© 2022 Wayne Thiebaud Foundation / Licensed by VAGA at Artists Rights Society (ARS), New York.

## FRONTISPIECE ELEVEN:

LOT 164  
Jack Whitten, *Cultural Shift (Let's Celebrate Lena Horne) A.K.A. The Lena Horne Jubilee*, 2010 (detail).  
© Jack Whitten Estate. Courtesy the Estate and Hauser & Wirth.

## OPPOSITE SALE INFORMATION:

LOT 172  
Jasper Johns, *O through 9*, 1979 (detail).  
© 2022 Jasper Johns / Licensed by VAGA at Artists Rights Society (ARS), New York.

## OPPOSITE CONTACT INFORMATION:

LOT 144  
Ed Ruscha, *Western with Fly*, 1967.  
© Ed Ruscha.

## OPPOSITE CALENDAR:

LOT 119  
Matthew Wong, *Mili's Corner*, 2019.  
© 2021 Monita K.Y. Cheng / Artists Rights Society (ARS), New York.

## SESSION I DIVIDER:

LOT 137  
Gerhard Richter, *Flow (933-1)*, 2013 (detail).  
© Gerhard Richter 2022 [0093].

## THE COLLECTION OF THOMAS AND DORIS AMMANN DAY SALE DIVIDER:

LOT 248  
Richard Pettibone, *Andy Warhol, Flowers*, 1970.  
© 2022 The Andy Warhol Foundation for the Visual Arts, Inc. / Licensed by Artists Rights Society (ARS), New York.

## SESSION II DIVIDER:

LOT 420  
Angel Otero, *Title to be Determined*, 2022 (detail).  
© Angel Otero.